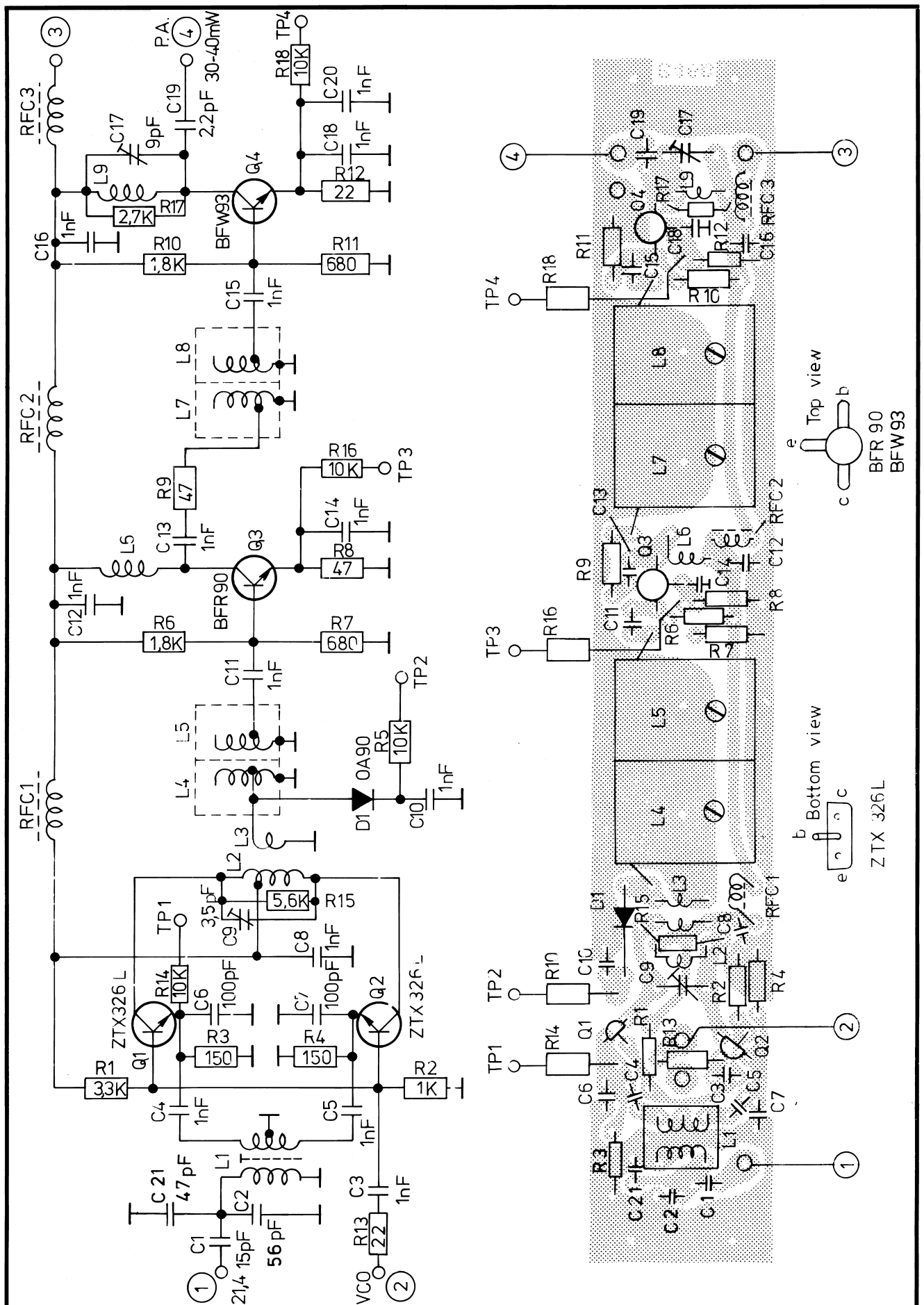
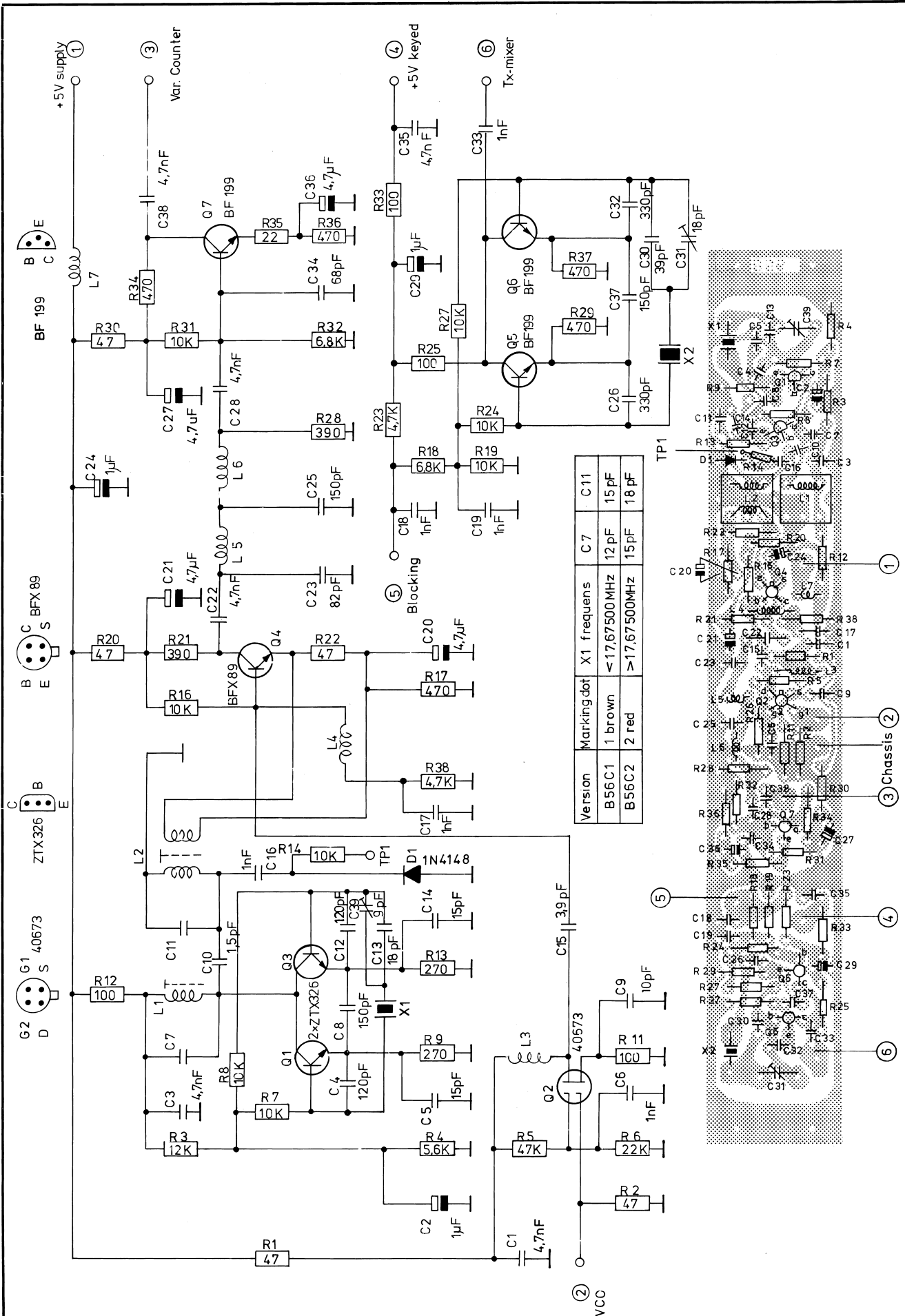


# AP-RADIOTELEFON

Nr.	Kode	Data	Nr.	Kode	Data
R1	13-289	3,3 K $\Omega$ 1/8W CR 16	C19	11-363	2,2 pF Ker.
R2	13-283	1 K $\Omega$ " "	C20	11-442	1 nF "
R3	13-273	150 $\Omega$ " "	C21	11-394	47 pF "
R4	13-273	150 $\Omega$ " "	D1	04-036	0A90
R5	13-382	10 K $\Omega$ $\frac{1}{4}$ W CR 25			
R6	13-286	1,8 K $\Omega$ 1/8W CR 16	Q1	19-115	ZTX326L
R7	13-281	680 $\Omega$ " "	Q2	19-115	ZTX326L
R8	13-267	47 $\Omega$ " "	Q3	19-114	BFR90
R9	13-267	47 $\Omega$ " "	Q4	19-119	BFW93
R10	13-286	1,8 K $\Omega$ " "			
R11	13-281	680 $\Omega$ " "	L1		76009-4E2
R12	13-263	22 $\Omega$ " "	L2		2x75616-4E2
R13	13-263	22 $\Omega$ " "	L3		75616-4E2
R14	13-382	10 K $\Omega$ $\frac{1}{4}$ W CR 16	L4		75603-4E2
R15	13-292	5,6 K $\Omega$ 1/8W CR 16	L5		75602-4E2
R16	13-382	10 K $\Omega$ $\frac{1}{4}$ W CR 25	L6		75614-4E2
R17	13-288	2,7 K $\Omega$ 1/8W CR 16	L7		75603-4E2
R18	13-382	10 K $\Omega$ $\frac{1}{4}$ W CR 25	L8		75602-4E2
			L9		75617-4E2
C1	11-381	15 pF Ker.			
C2	11-396	56 pF "	RFC		75290-4E2
C3	11-409	1 nF "	1		
C4	11-409	1 nF "	RFC		75290-4E2
C5	11-409	1 nF "	2		
C6	11-401	100 pF "	RFC		75290-4E2
C7	11-401	100 pF "	3		
C8	11-409	1 nF "			
C9	19-346	3,5 pF Trim.			
C10	11-409	1 nF Ker.			
C11	11-409	1 nF "			
C12	11-409	1 nF "			
C13	11-409	1 nF "			
C14	11-442	1 nF "			
C15	11-409	1 nF "			
C16	11-409	1 nF "			
C17	19-329	9 pF Trim.			
C18	11-442	1 nF Ker.			
Tx-mixer UHF Print board B 46 C 1 Tilhører tegn. nr.: 75511-4E2			Rettet:		Tegn.:
					Kontr.:
					Stykl. nr.: 75511-4S2



Rettet: 9-2-77 HJ. 	TX mixer UHF Print board B46C 1 <b>AP-RADIOTELEFON</b>	Tegn.: 3-11-75 AC Stykl. nr.: Tegn. nr.:	Kontr.: 75511-4E2
------------------------	--	---	----------------------



Rettet: 30-8-77 JH/AC  
10-2-78 HJ LT  
8-5-78 JH/AC

Synthesizer mixer and Tx-oscillator UHF  
Print board B56 C 1 + C 2

AP - RADIOTELEFON

Tegn.: 19-12-75  
EH

Kontr.: 23-1-76  
CHB

Stykl. nr.:

Tegn. nr.:

75628 - 3E2

# AP-RADIOTELEFON

Nr.	Kode	Data	Nr.	Kode	Data
R1	13-267	47 $\Omega$ 1/8 W CR16	C1	11-416	4,7 nF Ker.
R2	13-267	47 $\Omega$ " " "	C2	11-502	1 $\mu$ F/35 V Tant.
R3	13-296	12 K $\Omega$ " " "	C3	11-416	4,7 nF Ker.
R4	13-292	5,6 K $\Omega$ " " "	C4	11-403	120 pF "
R5	13-302	47 K $\Omega$ " " "	C5	11-381	15 pF "
R6	13-299	22 K $\Omega$ " " "	C6	11-409	1 nF "
R7	13-295	10 K $\Omega$ " " "	C7/1	11-379	12 pF "
R8	13-295	10 K $\Omega$ " " "	C7/2	11-381	15 pF "
R9	13-276	270 $\Omega$ " " "	C8	11-404	150 pF "
			C9	11-376	10 pF "
R11	13-271	100 $\Omega$ " " "	C10	11-362	1,5 pF "
R12	13-271	100 $\Omega$ " " "	C11/		
R13	13-276	270 $\Omega$ " " "	1	11-381	15 pF "
R14	13-382	10 K $\Omega$ 1/4 W CR25	C11/		
R16	13-295	10 K $\Omega$ 1/8 W CR16	2	11-434	18 pF "
R17	13-279	470 $\Omega$ " " "	C12	11-403	120 pF "
R18	13-293	6,8 K $\Omega$ " " "	C13	11-434	18 pF "
R19	13-295	10 K $\Omega$ " " "	C14	11-381	15 pF "
R20	13-267	47 $\Omega$ " " "	C15	11-433	3,9 pF "
R21	13-278	390 $\Omega$ " " "	C16	11-409	1 nF "
R22	13-267	47 $\Omega$ " " "	C17	11-409	1 nF "
R23	13-291	4,7 K $\Omega$ " " "	C18	11-409	1 nF "
R24	13-295	10 K $\Omega$ " " "	C19	11-409	1 nF "
R25	13-271	100 $\Omega$ " " "	C20	11-504	4,7 $\mu$ F/10V Tant.
R27	13-295	10 K $\Omega$ " " "	C21	11-504	4,7 $\mu$ F/10V "
R28	13-278	390 $\Omega$ " " "	C22	11-416	4,7 nF Ker.
R29	13-279	470 $\Omega$ " " "	C23	11-399	82 pF "
R30	13-267	47 $\Omega$ " " "	C24	11-502	1 $\mu$ F/35V Tant.
R31	13-295	10 K $\Omega$ " " "	C25	11-404	150 pF Ker.
R32	13-293	6,8 K $\Omega$ " " "	C26	11-430	330 pF N750 "
R33	13-271	100 $\Omega$ " " "	C27	11-504	4,7 $\mu$ F/10 V Tant.
R34	13-279	470 $\Omega$ " " "	C28	11-416	4,7 nF Ker.
R35	13-263	22 $\Omega$ " " "	C29	11-502	1 $\mu$ F/35 V Tant.
R36	13-279	470 $\Omega$ " " "	C30	11-393	39 pF Ker.
R37	13-279	470 $\Omega$ " " "	C31	19-330	18 pF Trim.
R38	13-291	4,7 K $\Omega$ " " "	C32	11-430	330 pF N750 Ker.
Synthesizer mixer and Tx-oscillator UHF Print board B56 C1 + B56 C2 Tilhører tegn. nr.: 75628-3E2					<div>Tegn.:</div> <div>Stykl. nr.:</div> <div>Kontr.:</div> <div>75628-4S2</div>

# AP-RADIOTELEFON

Nr.	Kode	Data	Nr.	Kode	Data
C33	11-409	1 nF Ker.			
C34	11-397	68 pF "			
C35	11-416	4,7 nF "			
C36	11-504	4,7 $\mu$ F/10 V Tant			
C37	11-404	150 pF Ker.			
C38	11-416	4,7 nF "			
C39	19-329	9 pF Trim			
D1	04-062	1N4148			
Q1	19-115	ZTX326			
Q2	19-128	40673			
Q3	19-115	ZTX326			
Q4	19-102	BFX89			
Q5	19-104	BF199			
Q6	19-104	BF199			
Q7	19-104	BF199			
L1		75594-4E2			
L2		75595-4E2			
L3		76079-4E2			
L4		76079-4E2			
L5	04-114	6,8 $\mu$ H			
L6	04-114	6,8 $\mu$ H			
L7	04-114	6,8 $\mu$ H			
X1		Frequency dependent on desired band spec. AP 25			
X2		Frequency dependent on mode of operation (simplex duplex etc) spec. AP 22			
Synthesizer mixer and Tx-oscillator UHF				Tegn.:	Stykl. nr.:
Print board B56 C1 + B56 C2				Kontr.:	75628-4S2
Tilhører tegn. nr.: 75628-3E2					

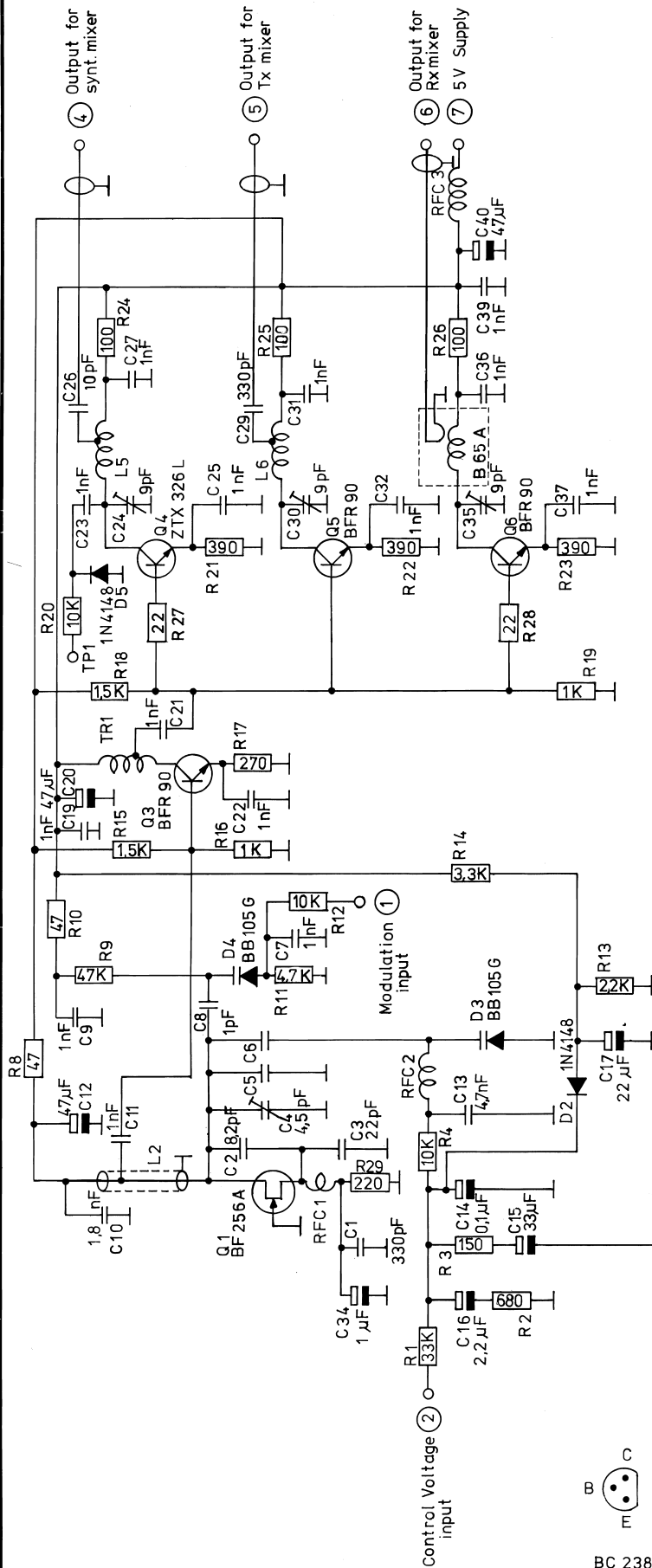
Bottom view

ZTX 326L

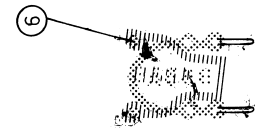
The diagram shows the bottom view of the ZTX 326L transistor package. It is a rectangular package with three pins. Pin 'e' is on the left, pin 'c' is on the right, and pin 'b' is at the bottom center. The package is labeled 'ZTX 326L'.

# AP-RADIOTELEFON

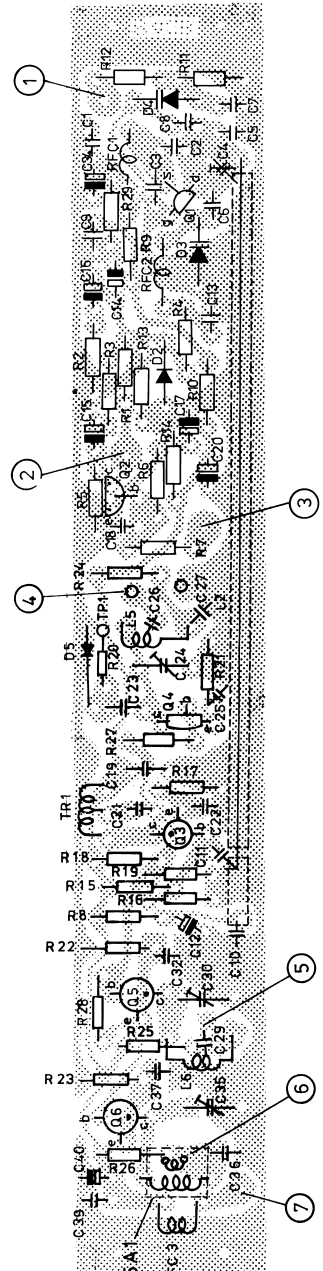
Nr.	Kode	Data	Nr.	Kode	Data
R1	13-289	3,3 KΩ 1/8W CR 16	C19	11-363	2,2 pF Ker.
R2	13-283	1 KΩ 1/8W CR 16	C20	11-442	1 nF "
R3	13-273	150 Ω " "	C21	11-394	47 pF "
R4	13-273	150 Ω " "	C22	11-442	1 nF "
R5	13-382	10 KΩ 1/4W CR 25	C23	11-442	1 nF "
R6	13-286	1,8 KΩ 1/8W CR 16			
R7	13-281	680 Ω " "	D1	04-036	0A90
R8	13-267	47 Ω " "			
R9	13-267	47 Ω " "	Q1	19-115	ZTX326L
R10	13-286	1,8 KΩ " "	Q2	19-115	ZTX326L
R11	13-281	680 Ω " "	Q3	19-114	BFR90
R12	13-263	22 Ω " "	Q4	19-119	BFW93
R13	13-263	22 Ω " "			
R14	13-382	10 KΩ 1/4W "	L1	25-066	76009-4E2
R15	13-289	3,3 KΩ 1/8W "	L2	25-062	2x75616-4E2
R16	13-382	10 KΩ 1/4W CR 25	L3	25-062	75616-4E2
R17	13-288	2,7 KΩ 1/8W CR 16	L4	25-050	75472-4E2
R18	13-382	10 KΩ 1/4W CR 25	L5	25-052	75474-4E2
			L6	25-060	75614-4E2
C1	11-381	15 pF Ker.	L7	25-097	81035-4E2
C2	11-396	56 pF "	L8	25-052	75474-4E2
C3	11-409	1 nF "	L9	25-063	75617-4E2
C4	11-409	1 nF "	L10	25-082	79233-4E2
C5	11-409	1 nF "			
C6	11-401	100 pF "	RFC 1	25-009	75290-4E2
C7	11-401	100 pF "			
C8	11-409	1 nF "	RFC 2	25-009	75290-4E2
C9	19-346	3,5 pF Trim.	RFC 3	25-009	75290-4E2
C10	11-409	1 nF Ker.			
C11	11-409	1 nF "			
C12	11-409	1 nF "			
C13	11-409	1 nF "			
C14	11-409	1 nF "			
C15	11-409	1 nF "			
C16	11-409	1 nF "			
C17	19-329	9 pF Trim.			
C18	11-442	1 nF Ker.			
Tx-mixer UHF Print board B 46 C1 Tilhører tegn. nr.: 75511-4E2			Rettet:		<div>Tegn.:</div> <div>Kontr.:</div>
					Stykl. nr.: 75511-4S2



Version	Marking dot	Rx freq. range	VCO freq. range	C5	C6	C2	C3
B43B1	1 brown	406-432 MHz	427,4-453,4 MHz	5,6pF	6,8pF	8,2pF	22pF
B43B2	2 red	432-450 MHz	453,4-471,4 MHz	3,9pF	5,6pF	8,2pF	22pF
B43B3	3 orange	450-470 MHz	471,4-491,4 MHz	2,2pF	5,6pF	8,2pF	22pF
B43B4	4 yellow	425-445 MHz	403,6-423,6 MHz	6,8pF	8,2pF	12pF	27pF



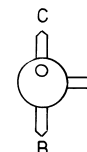
B65A1



BC 238 B  
Bottom view



BF 256 A  
Bottom view



BFR 90  
Top view



ZTX 326  
Bottom view

Rettet: 13-4-77 CHB/AC  
9-6-77 LT/AC  
22-9-77 LT/AC  
6-1-78 HJ/R.  
9-2-78 HJ/LT  
20-1-80 BC

Voltage controlled oscillator for UHF  
Print board B43B 1, 2, 3 and 4 B 65 A 1

AP-RADIOTELEFON

Tegn.: 22-1-76 NC Kontr.: 22-1-76 CHB

Stylk. nr.:

Tegn. nr.:

76024-3E2



# AP-RADIOTELEFON

Nr.	Kode	Data	Nr.	Kode	Data
R1	13-300	33 KΩ 1/8 W CR16	C4	19-319	4,5 pF Trim.
R2	13-281	680 Ω " "	C5/1	11-370	5,6 pF Ker.
R3	13-273	150 Ω " "	C5/2	11-433	3,9 pF "
R4	13-295	10 KΩ " "	C5/3	11-439	2,2 pF NPO "
R5	13-306	100 KΩ " "	C5/4	11-373	6,8 pF Ker.
R6	13-295	10 KΩ " "			
R7	13-295	10 KΩ " "	C6/1	11-373	6,8 pF "
R8	13-267	47 Ω " "	C6/2	11-370	5,6 pF "
R9	13-302	47 KΩ " "	C6/3	11-370	5,6 pF "
R10	13-267	47 Ω " "	C6/4	11-374	8,2 pF "
R11	13-291	4,7 KΩ " "			"
R12	13-295	10 KΩ " "	C7	11-409	1 nF "
R13	13-287	2,2 KΩ " "	C8	11-361	1 pF "
R14	13-289	3,3 KΩ " "	C9	11-409	1 nF "
R15	13-285	1,5 KΩ " "	C10	11-441	1,8 nF Chip "
R16	13-283	1 KΩ " "	C11	11-409	1 nF "
R17	13-276	270 Ω " "	C12	11-509	47 µF/6,3 V Tant.
R18	13-285	1,5 KΩ " "	C13	11-416	4,7 nF Ker.
R19	13-283	1 KΩ " "	C14	11-500	0,1 µF/35 V Tant.
R20	13-382	10 KΩ 1/4 W CR25	C15	11-508	33 µF/10 V "
R21	13-278	390 Ω 1/8 W CR16	C16	11-503	2,2 µF/25 V "
R22	13-278	390 Ω " "	C17	11-507	22 µF/25 V "
R23	13-278	390 Ω " "	C18	11-409	1 nF Ker.
R24	13-271	100 Ω " "	C19	11-409	1 nF "
R25	13-271	100 Ω " "	C20	11-509	47 µF/6,3 V Tant.
R26	13-271	100 Ω " "	C21	11-409	1 nF Ker.
R27	13-263	22 Ω " "	C22	11-409	1 nF "
R28	13-263	22 Ω " "	C23	11-409	1 nF "
R29	13-275	220 Ω " "	C24	19-329	9 pF Trim.
			C25	11-409	1 nF Ker.
C1	11-406	330 pF Ker.	C26	11-376	10 pF "
C2/1	11-374	8,2 pF "	C27	11-409	1 nF "
C2/2	11-374	8,2 pF "	C28		
C2/3	11-374	8,2 pF "	C29	11-406	330 pF "
C2/4	11-379	12 pF "	C30	19-329	9 pF Trim.
C3/1	11-385-	22 pF	C31	11-409	1 nF Ker.
,2,3					
C3/4	11-388	27 pF	C32	11-409	1 nF "
Voltage controlled oscillator for UHF Print board B43B1,2,3 and Print board B65 Tilhører tegn. nr.: 76024-3E2 B65A1					<div>Tegn.: Stykl. nr.: 76024-4S2</div> <div>Kontr.:</div>

# AP-RADIOTELEFON

Nr.	Kode	Data	Nr.	Kode	Data
C34	11-502	1 $\mu$ F/25 V Tant.			
C35	19-329	9 pF Trim.			
C36	11-409	1 nF Ker.			
C37	11-409	1 nF "			
C38					
C39	11-409	1 nF "			
C40	11-509	47 $\mu$ F/6,3V Tant.			
D2	04-062	1N4148			
D3	04-009	BB105G			
D4	04-009	BB105G			
D5	04-062	1N4148			
Q1	19-129	BF256A Philips			
Q2	19-093	BC238B			
Q3	19-114	BFR90			
Q4	19-115	ZTX326L			
Q5	19-114	BFR90			
Q6	19-114	BFR90			
L2		75523-4E2 coaxca.			
L5	25-068	76082-4E2			
L6	25-068	76082-4E2			
TR1	25-007	75288-4E2			
RFC 1	04-114	6,8 $\mu$ H			
RFC 2	04-114	6,8 $\mu$ H			
RFC 3	04-117	100 $\mu$ H			
Voltage controlled oscillator for UHF Print board B43B 1,2,3, and Print board Tilhører tegn. nr.: 76024-3E2			<div>Tegn.:</div> <div>Kontr.:</div> <div>Stykl. nr.: 76024-4S2</div>		