

27 MAJ 1993

JDS

153

SAILOR

Service Information No.
Kundendienst-Mitteilung No.
Service Information No.
Información de servicio No.
Servicemeddelelse No.

Series / Serie / Numéro de série / Serie / Serie

Date / Datum / Date / Fecha / Dato

Maj 1993

SAILOR C2149

Det er konstateret, at der i ekstreme installationer med meget elektrisk støj, kan opstå forstyrrelse af kommunikationen mellem SAILOR C2149 og RM2150/RM2151.

Ved at bortklippe dioden D22 (1N4448) på interface modulet 4 (627054) i SAILOR C2149 forbedres systemets støjimmunitet, og kommunikationen vil ikke mere kunne forstyrres.

I enkelte installationer er der på Inmarsat-C udstyret problemer med at meddelelserne "remote unit error" og "remote unit available" periodisk kommer på skærmen. Årsagen til dette er et timingproblem i SAILOR C2149, og dette løses ved at skifte U8-3 på mikroprocessor modul 3 til version C1100I (520F) S.P. nr. 727497.

Den nye kreds leveres uden beregning fra S.P. Radio A/S.

SAILOR C2149

We have realized that in extreme installations with much electrical noise, a disturbance of the communication between SAILOR C2149 and RM2150/RM2151 may arise.

By cutting off the diode D22 (1N4448) on the interface module 4 (627054) in SAILOR C2149 the system noise immunity is improved, and the disturbance of the communication is prevented.

In some installations, the messages "remote unit error" and "remote unit available" appear periodically on the screen in connection with the Inmarsat-C equipment. The reason is a timing problem in the SAILOR C2149, and the problem is solved by exchanging U8-3 on the microprocessor module 3 with version C1100I (520F) S.P. no. 727497.

The new circuit is supplied free of charge from S.P. Radio A/S.



Please file this information in the service-portfolio we have sent you.

Bitte archivieren Sie diese Mitteilung in der Kundendienstmappe, die wir Ihnen gesandt haben.

Nous vous prions de bien vouloir classer ce document dans le dossier bleu qui vous a été envoyé à cet effet.

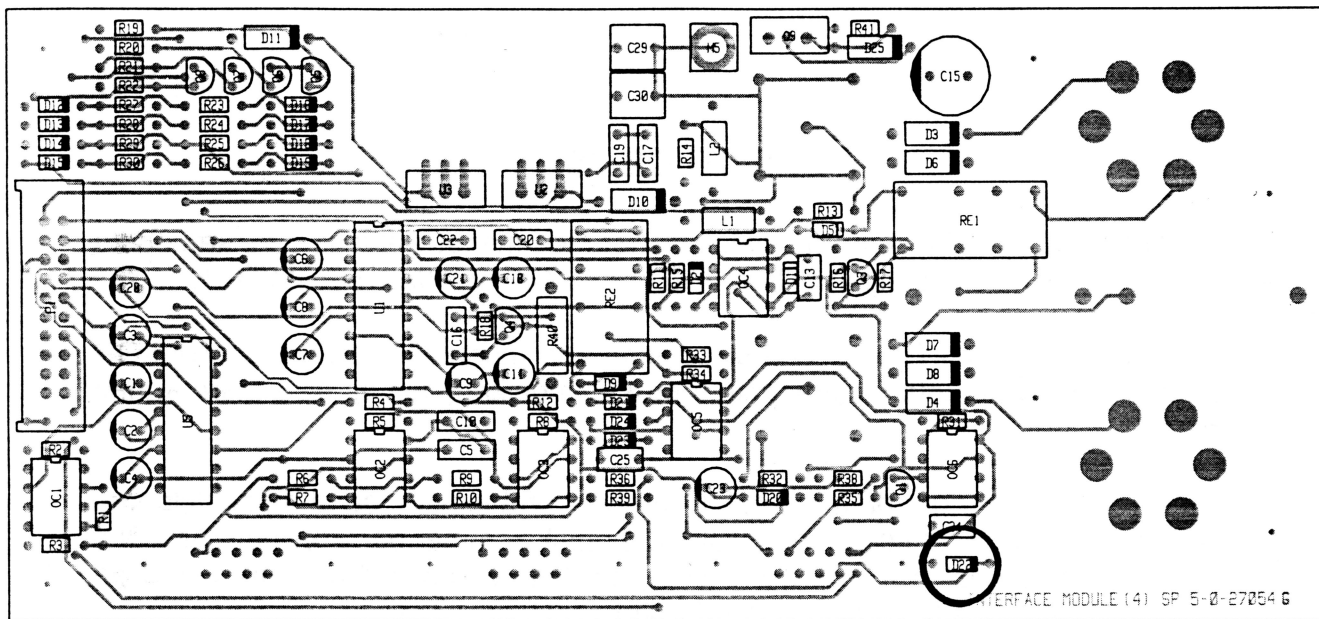
Sivanse archivar esta información en la cubierta de servicio que les hemos enviado a Ustedes.

De bedes venligst arkivere denne meddelelse i den tilsendte servicemappe.

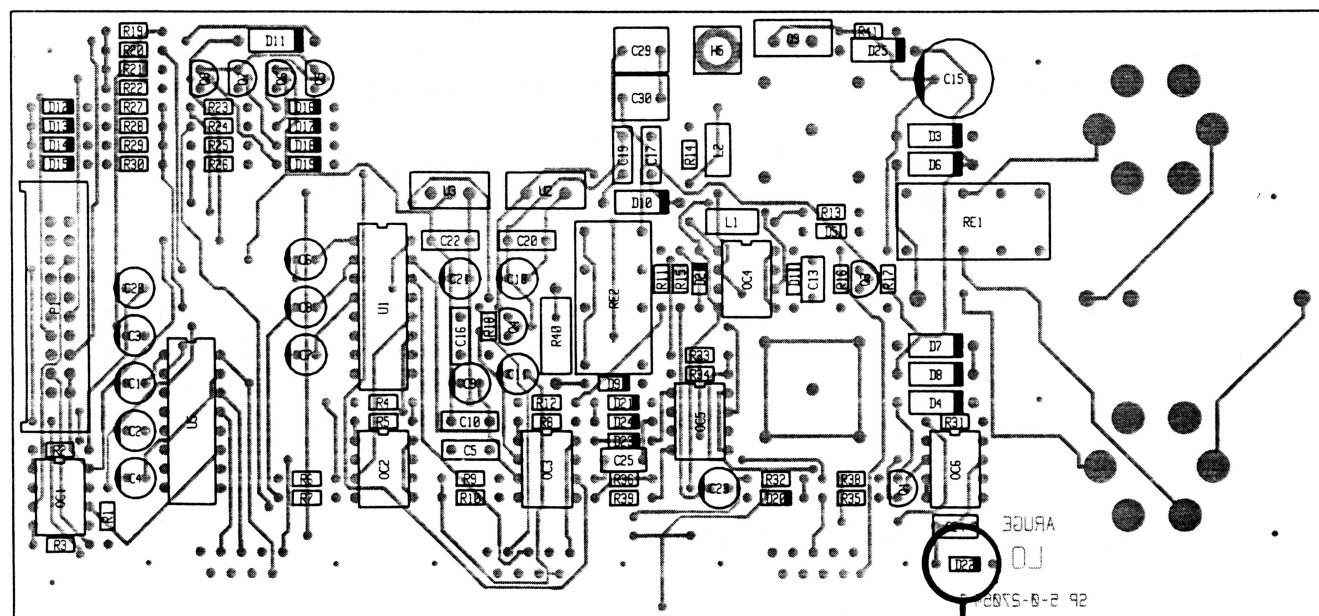
A/S S. P. RADIO

Aalborg - Denmark

5.4. COMPONENT LOCATION INTERFACE (MODULE 4)



Seen from component side with upper side tracks.



Seen from component side with lower side tracks.

D22