

Sorensen

DCR-B2 SERIES

**2700 - Watt
Power Supplies**

Instruction Manual

Manual covers DCR-B2 models:

20-115B2	150-18B2
40-70B2	300-9B2
60-45B2	600-4.5B2
80-33B2	

SORENSEN

**Division of Elgar
9250 Brown Deer Road
San Diego, CA 92121-2294**

1-800-733-5427

Tel: (858) 450-0085

Fax: (858) 458-0267

Email: sales@elgar.com

www.elgar.com

©2000 by Sorensen, Division of Elgar Electronics Corporation

This document contains information proprietary to Sorensen, Elgar Electronics Corporation. The information contained herein is not to be duplicated or transferred in any manner without prior written permission from Sorensen.

March, 2000

Document No. 1063700 Rev J

SORENSEN FIVE-YEAR WARRANTY

Sorensen, a division of Elgar Electronics Corporation, warrants its products to be free from defects in material and workmanship. This warranty is effective for five years from the date of shipment of the product to the original purchaser. Liability of Sorensen under this warranty shall exist provided that:

- the Buyer exposes the product to normal use and service and provides normal maintenance on the product;
- Sorensen is promptly notified of defects by the Buyer and that notification occurs within the warranty period;
- the Buyer receives a Return Material Authorization (RMA) number from Sorensen's Repair Department prior to the return of the product to Sorensen for repair, phone 800-458-4258;
- the Buyer returns the defective product in the original, or equivalent, shipping container;
- if, upon examination of such product by Sorensen it is disclosed that, in fact, a defect in materials and/or workmanship does exist, that the defect in the product was not caused by improper conditions, misuse, or negligence; and,
- that Sorensen QA seal and nameplates have not been altered or removed and the equipment has not been repaired or modified by anyone other than Sorensen authorized personnel.

This warranty is exclusive and in lieu of all other warranties, expressed or implied, including, but not limited to, implied warranties of merchantability and fitness of the product to a particular purpose. Sorensen, its agents, or representatives shall in no circumstance be liable for any direct, indirect, special, penal, or consequential loss or damage of any nature resulting from the malfunction of the product. Remedies under this warranty are expressly limited to repair or replacement of the product.

CONDITIONS OF WARRANTY

- To return a defective product, contact a Sorensen representative or the Sorensen factory for an RMA number. Unauthorized returns will not be accepted and will be returned at the shipper's expense.
- For Sorensen products found to be defective within thirty days of receipt by the original purchaser, Sorensen will absorb all ground freight charges for the repair. Products found defective within the warranty period, but beyond the initial thirty-day period, should be returned prepaid to Sorensen for repair. Sorensen will repair the unit and return it by ground freight pre-paid.
- Normal warranty service is performed at Sorensen during the weekday hours of 7:30 am to 4:30 pm Pacific time. Warranty repair work requested to be accomplished outside of normal working hours will be subject to Sorensen non-warranty service rates.
- Warranty field service is available on an emergency basis. Travel expenses (travel time, per diem expense, and related air fare) are the responsibility of the Buyer. A Buyer purchase order is required by Sorensen prior to scheduling.
- A returned product found, upon inspection by Sorensen, to be in specification is subject to an inspection fee and applicable freight charges.
- Equipment purchased in the United States carries only a United States warranty for which repair must be accomplished at the Sorensen factory.

Sorensen

Committed to Quality...Striving for Excellence

TABLE OF CONTENTS

SECTION 1	INTRODUCTION	Page
1.1	INTRODUCTION	1-1
1.2	DESCRIPTION	1-1
	1.2.1 General	1-1
	1.2.2 Automatic Crossover.....	1-2
	1.2.3 Remote Sensing.....	1-2
	1.2.4 Series Operation	1-2
	1.2.5 Parallel Operation	1-2
	1.2.6 Remote Programming.....	1-2
	1.2.7 Unit Shutdown Circuit.....	1-3
	1.2.8 Protection Features	1-3
1.3	OPTIONAL MODIFICATIONS.....	1-3
1.4	SPECIFICATIONS	1-4
SECTION 2	INSTALLATION	
2.1	GENERAL	2-1
2.2	INITIAL INSPECTION	2-1
2.3	ELECTRICAL INSTALLATION	2-1
	2.3.1 Input Power Cord.....	2-2
2.4	MECHANICAL INSTALLATION	2-2
2.5	ELECTRICAL CHECK	2-2
	2.5.1 Voltage Mode.....	2-2
	2.5.2 Current Mode	2-3
SECTION 3	OPERATION	
3.1	GENERAL	3-1
3.2	VOLTAGE MODE OPERATION	3-4
	3.2.1 Local Sensing	3-4

TABLE OF CONTENTS (Cont'd)

SECTION 3	<u>Page</u>	OPERATION
	3.2.2	Remote Sensing..... 3-4
	3.2.3	Resistance Programming Voltage Mode 3-6
	3.2.4	Signal Programming Voltage Mode 3-8
3.3		CURRENT MODE OPERATION 3-8
	3.3.1	Resistance Programming Current Mode 3-9
	3.3.2	Signal Programming Current Mode 3-10
	3.3.3	Alternate Current Programming Method 3-11
	3.3.3.1	Calibration Procedure 3-11
3.4		PARALLEL OPERATION 3-13
	3.4.1	Direct Paralleling 3-13
	3.4.2	Master/Slave Paralleling 3-14
3.5		SERIES OPERATION 3-15
	3.5.1	Direct Series Connections 3-15
	3.5.2	Master/Slave Connections 3-16
3.6		UNIT SHUTDOWN CIRCUIT 3-18
3.7		OVP 3-18
	3.7.1	OVP Adjustment..... 3-19
	3.7.2	Cautions..... 3-19
3.8		CHANGEABLE CURRENT PROGRAMMING PARAMETERS 3-20
SECTION 4		THEORY OF OPERATION
	4.1	INTRODUCTION 4-1
	4.2	PHASE CONTROL PRINCIPLE 4-1
	4.3	BLOCK DIAGRAM ANALYSIS 4-3
	4.4	DETAILED CIRCUIT DESCRIPTION 4-3
	4.4.1	Reference and Bias Supplies 4-3

TABLE OF CONTENTS (Cont'd)

4.4.2	Voltage Mode Section	4-4
-------	----------------------------	-----

SECTION 4

Page

THEORY OF OPERATION

4.4.3	Current Mode Section	4-5
4.4.4	Ramp Generator, Reset Circuit and Comparator ...	4-5
4.4.5	Blocking Oscillator Circuit	4-6
4.4.6	Turn-On and Shut-Down Circuits	4-6
4.4.7	Power Section	4-7
4.4.8	Overvoltage Protector	4-7
4.4.9	Indicator Lamps.....	4-7
4.4.10	Changeable Current Programmable Parameters.....	4-8

SECTION 5

MAINTENANCE

5.1	GENERAL	5-1
5.2	PERIODIC SERVICING.....	5-1
5.3	TROUBLESHOOTING	5-1
5.4	CALIBRATION	5-1
5.5	PERFORMANCE TESTING	5-3
5.5.1	Voltage Mode Regulation & Ripple.....	5-4
5.5.2	Current Mode Regulation.....	5-5
5.5.3	Transient Response	5-5
5.6	Hi-Pot Test Procedure	5-6

SECTION 6

DRAWINGS AND PARTS LISTS

6.1	GENERAL	6-1
6.2	TABLE HEADINGS DEFINED	6-1
6.2.1	Circuit Symbols	6-1
6.2.2	Sorensen Part Number	6-1

LIST OF ILLUSTRATIONS

Figure	Title	Page
3-1	DCR-B2 Controls and Indicators	3-2
3-2	TB3 Terminal Block Connections	3-3
3-3	Remote Sensing Connections	3-5
3-4	Illustration of Load Lead Resistance (Remote Sensing).....	3-6
3-5	Resistance Programming Voltage Mode Connections.....	3-7
3-6	Resistance Programming Current Mode Connections	3-9
3-7	DCR-B2 Interconnections (Current Programming)	3-11
3-8	Direct Parallel Connections.....	3-13
3-9	Master/Slave Connections, Parallel Operation	3-14
3-10	Direct Series Connections (Remote Sensing).....	3-15
3-11	Master/Slave Connections Series Operation	3-16
4-1	Phase Control Firing Angles.....	4-1
4.2	DCR-B2 Functional Block Diagram.....	4-2
4.3	Passing Stage Principle	4-4
5-1	Performance Test Setup	5-4
1064088	Unit Control Drawing	6-2
1064045	Unit Schematic	6-3
	Component Layout, Typical Assembly.....	6-6
1068986	DCR 20-115B2, DCR 40-70B2	6-6
1068987	DCR 60-45B2, DCR 80-33B2, DCR 150-18B2	6-7
1068988	DCR 300-9B2, DCR 600-4.5B2	6-8
	Capacitor Assembly.....	6-13
1063229	DCR 20-115B2, DCR 40-70B2, DCR 60-45B2,	6-13
	DCR 80-33B2, DCR 150-18B2	6-14
1063228	DCR 300-9B2, DCR 600-4.5B2	6-14
1063005	DCR-B2 Control Board Assembly	6-16
1063006	DCR-B2 Control Board Schematic	6-17

LIST OF TABLES

Table	Title	Page
1-1	Specifications.....	1-4
3-1	DCR-B2 Control Indicators.....	3-2
3-2	RA/RB Values--Two Identical DCRB2 Units Series Connected.....	3-17
3-3	Recommended Rectifiers/Heatsinks Series Operation.....	3-17
5-1	DCR-B2 Troubleshooting.....	5-3
5-2	Sensing Resistor Values (Current Mode Regulation Check).....	5-6
5-3	Unit Calibration Specifications.....	5-6
	Unit Replacement Parts List.....	6-9
	Capacitor Replacement Parts List.....	6-15
	Control Printed Circuit Board Replacement Parts List.....	6-19

SECTION 1 INTRODUCTION

1.1 INTRODUCTION

This manual contains operation and maintenance data on the 2700 watt units of the DCR-B2 series Sorensen Power Supplies. It is intended to familiarize the user with the functioning of the unit, to introduce the varied applications to which the unit may be adapted, and to furnish sufficient maintenance data to assure long operating life.

Six major sections form the manual divisions. Section 1 contains a brief functional description of the DCR-B2 series power supplies. Initial inspection and checkout procedures are outlined in Section 2. Operating instructions, including methods for adapting units to various applications, comprise Section 3. Sections 4 and 5 provide the principles of operation and maintenance procedures respectively. System drawings and the replacement parts list are provided in Section 6.

1.2 DESCRIPTION

1.2.1 General

Designed for either bench or rack use, the typical DCR-B2 power supply provides a highly regulated, precise dc output, adjustable over a wide range. It operates from a nominal 115 Vac (220/230 Vac inputs are available as options) and exhibits a rapid response to transients, both load and line.

DCR-B2 series supplies are a phase-controlled type with SCR's (Silicon Controlled Rectifiers) at the input to the transformer, followed by a passive Pi filter. This design allows for a wide range of output voltages, simplicity of design, and offers large amounts of regulated power at relatively high efficiencies compared to linear regulators.

Silicon type semiconductors are used extensively in DCR-B2 circuitry, and contribute significantly to the units wide ambient temperature range characteristic. Low dissipation transistors and diodes are located on a single printed circuit board while high dissipation devices are heat-sinked to aluminum brackets and heatsinks.

All controls used during normal operation are mounted on the front panel. These include a power circuit breaker, FINE and COARSE VOLTAGE adjust potentiometers, and FINE and COARSE CURRENT adjust potentiometers. The system output is taken across a terminal pair at rear terminal strip TB2 or from the binding posts on the front panel of the supply.

A variety of Sorensen power supply application notes are available through your Sorensen Service Representative. These notes detail many hook-up configurations and special usages available to meet most power supply applications.

1.2.2 Automatic Crossover

There are two basic operating modes, voltage and current. In the voltage mode, the voltage is held constant while the current varies with the load. In the current mode, the voltage varies, and current is held constant. The automatic crossover feature enables the unit to switch operating modes as a function of load requirements. If, for example, load current attempts to increase above a preset current limit, the unit will switch operation automatically from the voltage to the current mode. In this mode, the current will be regulated at the value preset on the front panel. If load requirements are lowered, return to the voltage regulating mode will occur automatically. Two red panel lamps indicate whether the supply is operating in the voltage or current mode.

1.2.3 Remote Sensing

Terminals located on rear-mounted terminal board TB3 offer a means of extending a unit's regulating point from the output terminals to the load. This effectively compensates for variations in the load lead voltage drop. Section 3 outlines the connections for remote sensing.

1.2.4 Series Operation

For applications requiring output voltages higher than a single unit can provide, DCR-B2 power supplies may be connected in series (See Section 3). Regulation in series operation is the sum of the regulations for all units.

1.2.5 Parallel Operation

Parallel operation may be used to service those applications requiring an output current higher than a single supply can provide. Using a master/slave approach, a maximum of four units can be connected in parallel. An alternate method of connection is direct paralleling. With this approach, there is no limit to the number of units which can be paralleled. The regulation will deteriorate, and will be the sum of the regulations for the individual settings plus the output voltage differences between units at no load.

1.2.6 Remote Programming

Output voltage or current of DCR-B2 power supplies may be remotely programmed in either the voltage or current mode by resistance or voltage signal. Details and considerations are given in Section 3.

1.2.7 Unit Shutdown Circuit

In the DCR-B2 line, application of the plus (+) sense (terminal 1 of TB3) to the shutdown terminal (terminal 11 of TB3) instantly shuts down the supply. This function can provide unit protection by connecting a temperature or voltage sensitive switch (or transistor) in this line to shut the system down under specified conditions. An example is in the master/slave connection of two DCR-B2 power supplies (refer to Section 3, Operating Instructions). If the shutdown function is adapted to the master unit, the system output goes to zero; if applied to the slave unit, only that unit is affected and the system output is reduced accordingly.

1.2.8 Protection Features

Protection against the effects of overloads and internal short circuits is provided. Overload protection is inherent in automatic crossover. The main power circuit components are protected by the unit circuit breaker. Control circuitry is protected by a fuse on the board.

In the event of an overvoltage condition at the output, such as a failure in the power supply or an externally induced condition, an overvoltage electronic crowbar is actuated by an integral OVP sensing circuit. The crowbar acts to quickly reduce the output voltage to zero. (See details in Section 3).

1.3 OPTIONAL MODIFICATIONS

The standard DCR-B2 unit is designed for operation from a nominal 208 Vac input; however, units may be purchased factory modified to accept inputs of 208, 220 or 230 Vac (modifications M2 or M3 respectively).

The sides of the DCR-B2 have inserts to allow attachment of slide rails. Consult the factory for information on these optional slide rails.

For information on additional modifications, consult the factory.

1.4 SPECIFICATIONS

The specifications for the DCR-B2 2700 watt series power supplies are given in Table 1-1.

Table 1-1 Specifications

DCR-B2 SPECIFICATIONS
2700 WATT SERIES

DCR Model	OUTPUT POWER			Constant Voltage Ripple (PARD) (mV rms)	Constant Current Ripple (PARD) (mA rms)	TEMP/CO		REMOTE PROGRAMMING		SIGNAL (Volt In/ Volt Out)	Efficiency (% Typ.)	INPUT POWER		OUTPUT IMPEDANCE (Typical)		
	Voltage (Vdc)	Current (Adc)	70°C			(mV/°C)	(mA/°C)	(Ohms/V)	(Ohms/A)			Voltage Range (Vac)	Current Max. (Aac)	Power Factor	120Hz	10kHz
20-115B2	0-20	150	58	65	375	3.0	35	600	3.5	1/2	70	187-229	22	.60	.006	.018
40-70B2	0-40	70	40	90	157	6.0	21	300	6	1/4	77	187-229	24	.58	.010	.030
60-45B2	0-60	45	26.5	125	93	9.0	13.5	200	9	1/6	80	187-229	23	.56	.019	.040
80-33B2	0-80	33	20	150	61	12.0	9.9	150	12	1/8	81	187-229	21	.57	.022	.055
150-18B2	0-150	18	10	300	36	22.5	5.4	80	22	1/15	83	187-229	21	.58	.057	.060
300-9B2	0-300	9	5.5	700	21	45.0	2.7	40	44	1/30	83	187-229	20	.57	.360	.400
600-4.5B2	0-600	4.5	2.5	1200	9	90.0	1.35	20	89	1/60	85	187-229	20	.57	1.00	1.10

Notes:

1. Optional Inputs: 208V, 220V, 230V (Options M1, M2, M3 respectively).

2. At 208V input.

COMMON SPECIFICATIONS

General:

Series Operation: To 200 Vdc Maximum. (150 and 300 volt models, only two in series); 600 volt model, no series operation.
 Parallel Operation: By master-slave (four units maximum) or straight parallel.
 Remote Sensing: See paragraph 3.2.2
 Operating Temperature Range: 0°C to 71°C
 Storage Temperature Range: -40°C to +85°C
 Isolation Voltage: 1000 Vdc input to output
 Finish: Bonderize-Black semi-gloss with white lettering.
 Overload/Short-circuit Protection: Adjustable current limiting with automatic recovery.
 Overvoltage Protector: Fully adjustable OVP on all models.
 Average Weight: 105 lbs.

Voltage Mode:

Regulation: 0.03% with load change (NL-to-FL or FL-to-NL) and a full line-voltage change combined.

Resolution: 0.05% of Eo max. (typical)

Drift (% Eo max): 0.1% typical, for 8 hours after 30-minute warmup with constant line, load, and ambient temperature.

Transient Response: 50ms (typical) to return to ±1% band for a step load change 50%-100% or 100%-50% of full load (20V models ±2%).
 Below 60 Hz, ripple and transient response characteristics will deteriorate by a factor of (60/x)² where F is the input frequency.

Current Mode:

Regulation: 0.25% with 0-95% compliance-voltage change and ±10% line voltage change combined.

Resolution: 0.05% of Io max (typical)

Drift (% Io max): 0.15% (typical)

SECTION 2 INSTALLATION

2.1 GENERAL

After unpacking, perform initial inspections and preliminary electrical check procedures to assure that the unit is in good working order. If it is determined that the unit is damaged, the carrier should be notified immediately. Repair problems should be directed to the nearest Sorensen representative, or to the factory.

2.2 INITIAL INSPECTION

Proceed as follows to inspect for damage incurred during shipment:

1. Inspect panel and chassis for scratches, dents and chips.
2. Turn front panel voltage and current controls from stop to stop. Rotation should be smooth through a 300 degree rotation.
3. Check meter faces for cracked or broken windows. Check each meter pointer for zero indication. If necessary, use adjust screw to bring indicator to zero.
4. Look for cracked or broken lenses on indicating lights.
5. Alternate power switch between ON and OFF. Action should be both positive and audible. Return switch to OFF position.
6. Remove rear Lexan Safety cover, and check terminal block TB3. Make sure that links are firmly in place across terminals 3-4, 5-6, 7-8. Replace cover.
7. Remove top cover retaining screw. Inspect components and printed circuit board for damage. Replace cover.

2.3 ELECTRICAL INSTALLATION

Standard units are shipped ready for use with nominal 208 Vac input, but may be factory or field modified to operate from a nominal 220 or 230 volt input. (M1, M2, M3 options respectively).

2.3.1 Input Power Cord

The input power cord terminates externally in a three prong, polarized plug. The unit chassis is wired to the plug through the line cord, and therefore, the insertion of the plug into a compatible receptacle, hooked up to a grounded input, will automatically ground the unit. If a grounded input is not available, use an adapter, making sure that the adapter's external lead is well grounded.

2.4 MECHANICAL INSTALLATION

As received, the unit is ready for bench use. To adapt for rack mounting, simply remove feet and reinstall the feet retaining screws. As the unit is convection cooled,, care must be taken when rack mounting to assure free air flow.

CAUTION

During installation, if two or more supplies are to be rack mounted or otherwise stacked, the operating ambient of the upper units should not exceed 70°C. Output current must be derated according to specifications for ambients above 40°C/104°F.

2.5 ELECTRICAL CHECK

2.5.1 Voltage Mode

To check voltage mode operation, proceed as follows:

1. Set POWER switch to OFF. Connect input as per paragraph 2.3.
2. Turn COARSE and FINE VOLTAGE controls fully counterclockwise; turn COARSE and FINE CURRENT controls fully clockwise.
3. Set unit power switch to ON with zero load current.
4. Turn COARSE VOLTAGE control slowly clockwise while observing the unit voltmeter. The pointer should swing upscale, and the voltage indicator light should be ON.
5. With the pointer at half scale, rotate the FINE VOLTAGE control from stop to stop. The voltage should vary approximately 0.4% of maximum output voltage.
6. Set POWER switch to OFF.

2.5.2 Current Mode

To check current mode operation, proceed as follows:

1. Set POWER switch to OFF.
2. Turn COARSE and FINE CURRENT controls fully counterclockwise. Set COARSE VOLTAGE control to its mid position.
3. Connect a wire, of sufficient gauge to handle full output current, across the output terminals. [TB2 (+) to TB2 (-)]
4. Set unit power to ON. The CURRENT mode indicator will illuminate.
5. Rotate COARSE CURRENT control slowly clockwise until a current indication appears. Continue clockwise rotation; the meter indication will increase accordingly.
6. Set unit POWER switch to OFF, and remove shorting wire.

SECTION 3 OPERATION

3.1 GENERAL

This section provides basic operating instructions, and details the methods by which DCR-B2 power supplies may be adapted to their more common applications including remote sensing, remote programming, series and parallel operation. Table 3-1 identifies the operating controls shown in Figure 3-1, and describes their functions.

WARNING

- Full system voltage appears across the unit output terminals. Follow operating procedures exactly and do not make terminal board or load terminal alterations with unit power ON.
- High voltage output and loss of current limiting can result from loosening or removing links on rear mounted terminal board TB3. This may result in personal injury and damage to equipment. Do not remove or loosen any links unless specifically instructed in the following procedures.
- F1 on PCB near connector is at AC line potential. This could cause personal injury. Disconnect power before removing PCB.

CAUTION

This unit contains an integral OVP device. This device places a short circuit across the output terminals when the OVP trip level setting is exceeded. If the load contains large capacitors or is an active load (such as a battery), the stored energy in the load will be discharged into the OVP device. This discharge may injure the OVP and/or the load. Connect a series diode in the output lead to block the load discharge, in such cases. See Figure 3-9 for typical diode connection and types.

Table 3-1 Front Panel Controls and Indicators

<u>CONTROL/INDICATOR</u>	<u>FUNCTION</u>
POWER indicator	A white light connected across the primary of input transformer T2. Illuminates when the unit POWER switch is in the ON position.
POWER switch	A 230 volt, 15 ampere circuit breaker is used to connect or disconnect input line voltage.
COARSE CURRENT adjust	A 650 ohm potentiometer used in the first stage of the current-mode amplifier to vary the reference, and subsequently the output current.
FINE VOLTAGE adjust and FINE CURRENT adjust	80 ohm potentiometers connected in series with the COARSE VOLTAGE and CURRENT potentiometers, used to make slight variations in the output voltage or current.
CURRENT mode indicator	A red light which illuminates when the unit is operating in the current regulating mode.
Panel voltmeter	A meter connected internally across the SENSE terminals, to indicate unit output voltage. *
Panel current meter	A meter connected in series with the NEGATIVE output, to indicate unit output current.
VOLTAGE mode indicator	A red light which illuminates when the unit is operating in the voltage regulating mode.
COARSE VOLTAGE adjust	A 13K ohm potentiometer across which the reference voltage for voltage-mode operation is developed. Used to adjust the output voltage.

* In local sense mode only; when remote sensing is used, indicates voltage across

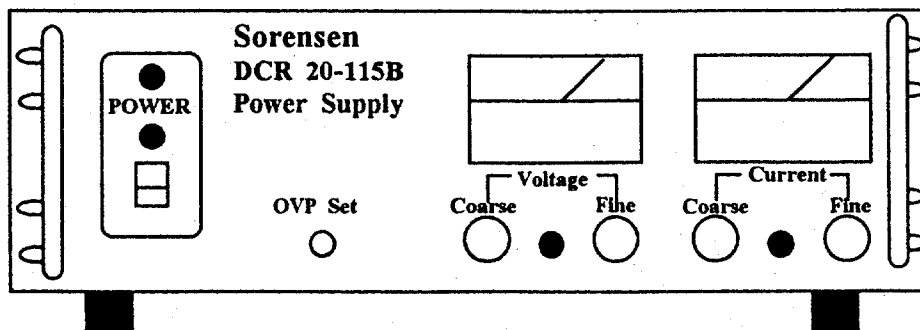


Figure 3-1 DCR-B Controls and Indicators

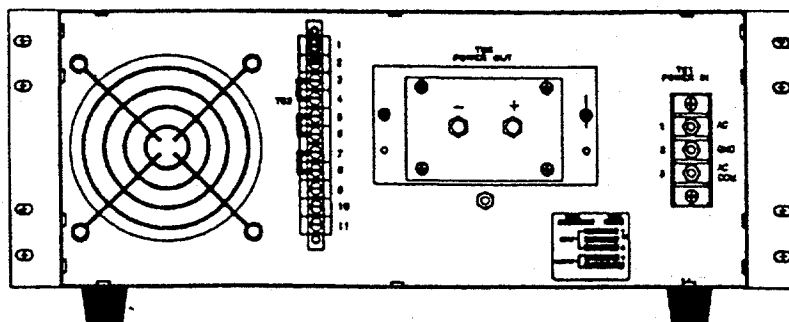
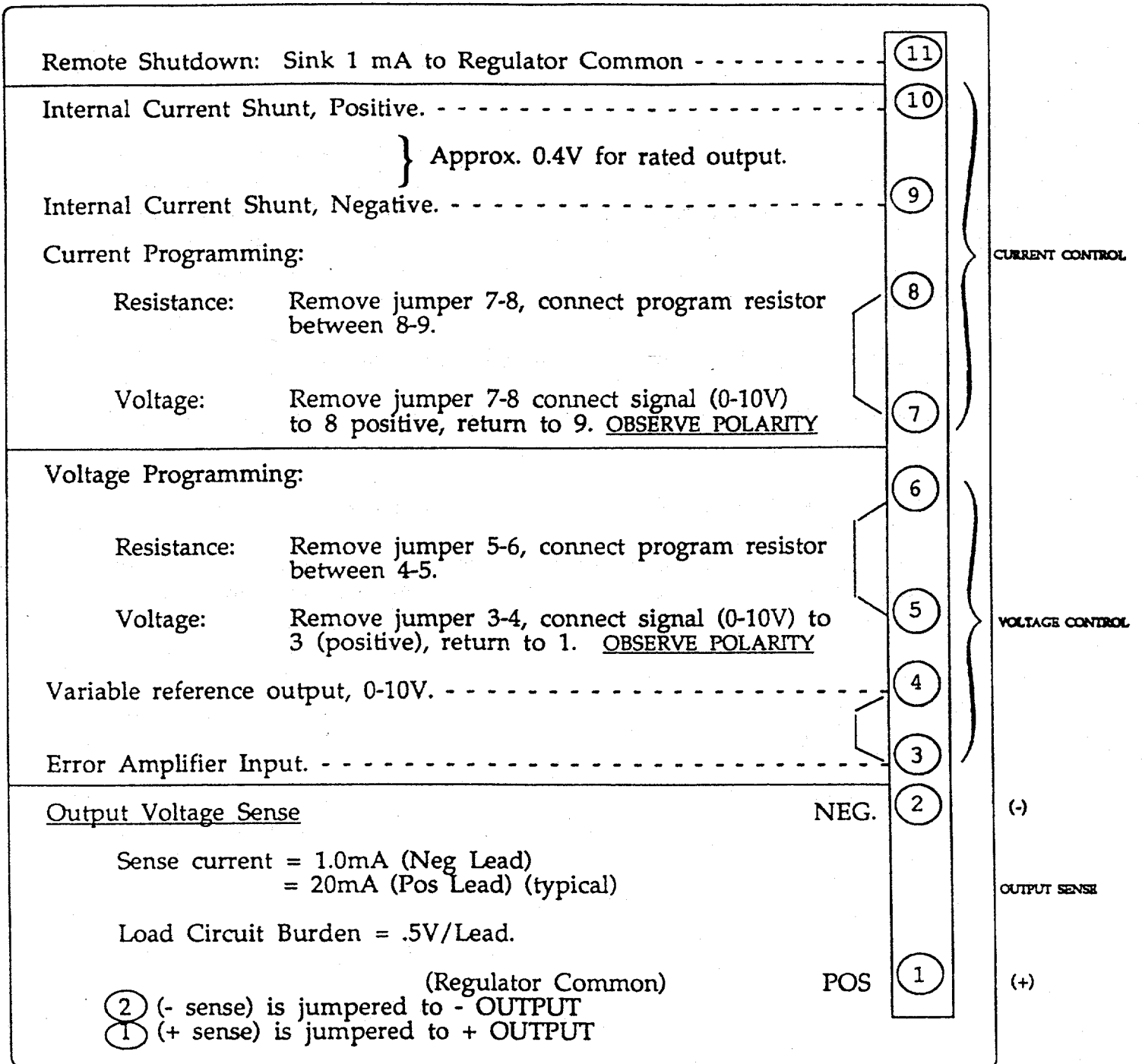


Figure 3-2 TB3 Terminal Block Connections

3.2 VOLTAGE MODE OPERATION

3.2.1 Local Sensing

DCR-B2 series units are shipped ready for use in the local sensing configuration, that is, with unit regulation occurring at the output terminals. Local sensing is usually acceptable for applications where the load current is nearly constant (or when large output conductors are used). In special applications (where load regulation is critical) remote sensing may be used (see para. 3.2.2). To operate unit in the voltage mode and local sensing configuration, proceed as follows:

1. Set POWER to OFF, connect appropriate input voltage.
2. Rotate the VOLTAGE controls fully counterclockwise and the CURRENT controls fully clockwise.
3. Set unit power to ON. Power light will illuminate.
4. Rotate COARSE VOLTAGE control until the unit voltmeter indicates the desired output voltage. Use FINE VOLTAGE control for small adjustments.
5. Set unit power to OFF.
6. Remove rear Lexan Safety cover and connect load lines to output terminals. Replace cover.
7. Set unit power to ON, and turn CURRENT control to the desired current limiting value. POWER light will illuminate, and the unit is in voltage mode operation.

NOTE

With unit in the voltage mode, an increase in load current requirements above the value set in step 7 will cause an automatic crossover to the current mode (current limiting). The current mode indicator will illuminate when this occurs.

3.2.2 Remote Sensing (Figure 3-3)

In the remote sensing condition, voltage regulation is at the load rather than at the unit output terminals. This compensates for voltage drop variations in the load lines.

NOTE

Voltage drop should not exceed 3 volts maximum per load lead, 1 volt maximum on 150 to 600V models. Voltage across the load is equal to voltage output of the unit minus line drops.

On high voltage models (150 to 600V), the 3V drop in the external load lines may cause damage to the DCR-B2 control amplifier under load short circuit conditions. A large portion of the rated output voltage is dropped across the load lines under the load short condition, and this high voltage will enter the amplifier causing damage. For this reason, it is recommended that remote sensing be avoided, or that the external line drop not exceed 1 volt per load line on the 150 to 600 Vdc models.

Note that a heavy pulse load can act the same as a momentary load short, and may damage the amplifier under remote sense conditions.

Consult the factory for recommendations if you intend to use remote sense under load shorting (or pulse loading) conditions.

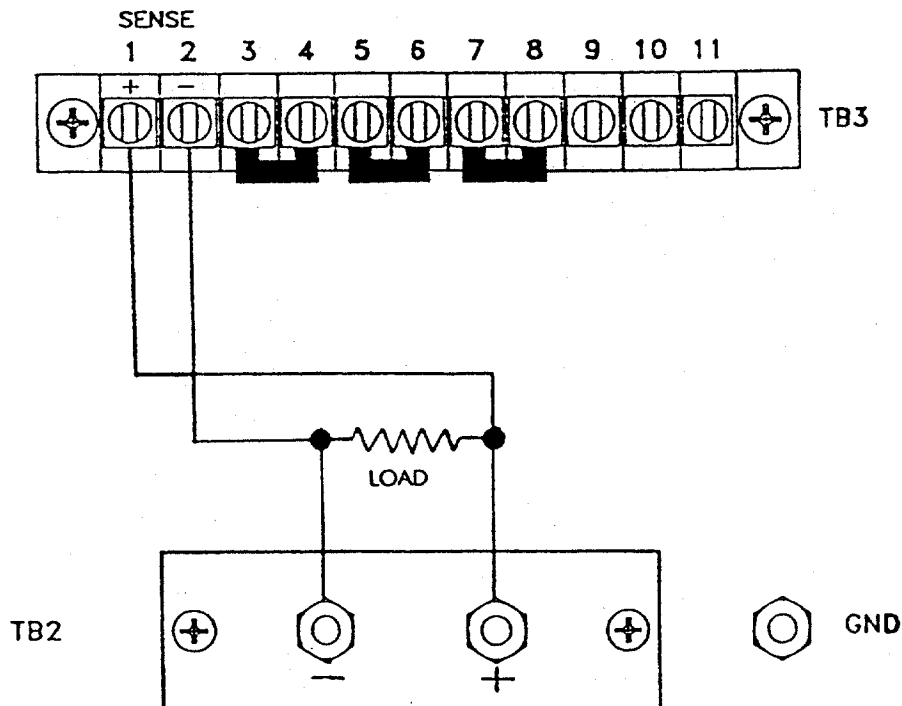


Figure 3-3 Remote Sensing Connections

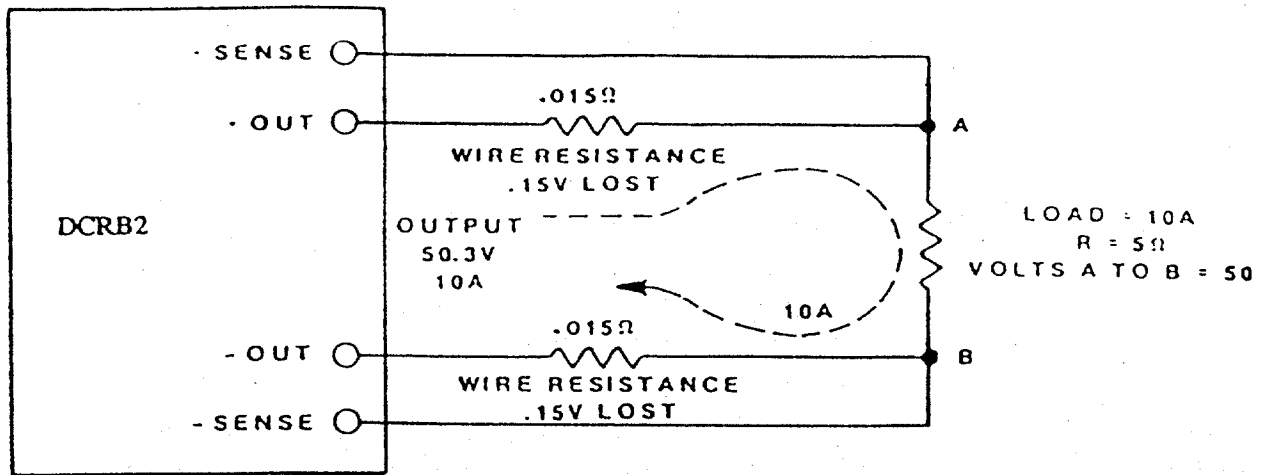


Figure 3-4 Illustration of Load Lead Resistance (Remote Sensing)

To adapt unit for remote sensing operation, proceed as follows:

1. With no load on the unit, apply input power and set output voltage to the desired value; then set POWER switch to OFF.
2. Remove rear Lexan Safety cover and disconnect red and black wires going from the plus and minus output terminals to the plus and minus sense terminals.
3. Run output lead from the load to the plus and minus output terminals.
4. Connect sensing leads from plus sense and minus sense terminals to the load. Observe Polarity. To reduce stray pickup, use shielded cable (shield grounded at the supply) or a twisted pair of wires for sensing leads.
5. Replace the rear Lexan Safety cover and set POWER to ON.

3.2.3 Resistance Programming Voltage Mode (Figure 3-5)

The output voltage of any model in the DCR-B2 series may be controlled from remote locations by connecting a resistance (fixed or variable) into the voltage mode amplifier reference circuit. Terminals on rear terminal board TB3 are provided for this purpose.

The ohms/volt sensitivity for each unit is listed in the specifications (Table 1-1). The programming resistor should have a low temperature coefficient (± 30 ppm), and should dissipate approximately 10 milliwatts. Programming current is approximately 1.0 milliamperes. If changes in the programmed output are to be made by abrupt changes in programming resistance, make before break switching should be used.

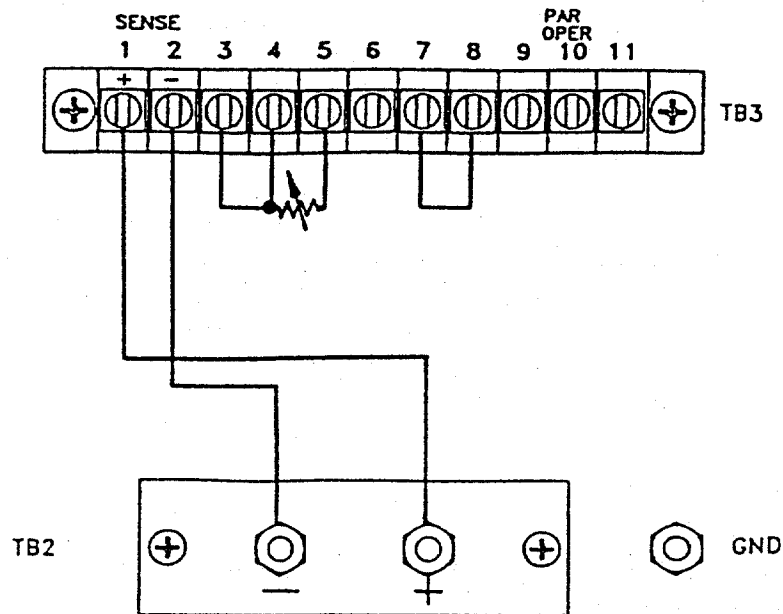


Figure 3-5 Resistance Programming Voltage Mode Connections

To adapt unit to resistance programming operation, proceed as follows:

1. Set unit power to OFF.
2. Remove link between terminals 5 and 6, and connect a programming resistor between terminals 4 and 5 (Figure 3-5). Use shielded or twisted wire for interconnecting leads.
3. Rotate COARSE and FINE VOLTAGE controls fully counterclockwise. Set POWER switch to ON.
4. Rotate CURRENT controls to desired limiting value. Remove input power, and connect load to output terminals.
5. Set POWER switch to ON. Unit will now supply programmed voltage to load.

CAUTION

If programming operation is to be discontinued, set POWER switch to OFF, remove programming resistor, and reconnect link between terminals 5 and 6.

NOTE

Panel controls are disabled when unit is connected in this way.

3.2.4 Signal Programming Voltage Mode

A fixed or variable voltage signal may be fed into the voltage mode amplifier circuit to provide a fixed or variable voltage output. The selected signal source output should be floating, unless the positive output of the supply is grounded. The required signal is 0-10V capable of sourcing 1 mA. Proceed as follows:

1. Set POWER switch to OFF.
2. Remove link from between terminals 3 and 4 of TB3.
3. Connect the signal source between terminals 3 and 1 of TB3. Observe Polarity (positive end to terminal 3).

CAUTION

If programming voltage exceeds 10V, excessive output voltage could occur which can damage the unit.

3.3 CURRENT MODE OPERATION

In current mode operation, the current output is regulated at the value determined by the setting of the current controls. The output voltage varies as a function of load. To operate unit in the current mode proceed as follows:

1. Set POWER switch to OFF.
2. Rotate FINE and COARSE VOLTAGE controls fully counterclockwise, and adjust COARSE CURRENT control approximately three quarters clockwise.
3. Set POWER switch to ON.
4. Rotate COARSE VOLTAGE control clockwise until unit voltmeter indicates the desired voltage limit.
5. Set POWER switch to OFF.
6. Connect load to output terminals. Observe Polarity.
7. Set POWER switch to ON, and turn CURRENT controls to desired current regulation setting. CURRENT MODE light will illuminate, and unit will deliver constant, regulated current to load.

NOTE

- Any output instability (such as oscillations due to inductive loading) can be eliminated by adjusting potentiometer R36 on the unit PCB.
 - If voltage increases above the limit set in step 3 preceding, unit will automatically crossover to voltage mode operation.
-

3.3.1 Resistance Programming Current Mode (Figure 3-6)

DCR-B2 supplies may be programmed externally to provide output current. This is done by inserting a fixed or variable resistance into the current mode amplifier reference circuit. The programming resistor selected should have a low temperature coefficient (± 30 ppm) and should dissipate approximately 0.5 milliwatt. Programming current is approximately 1.0 milliampere. Switch S1 must be set for 400mV programming mode.

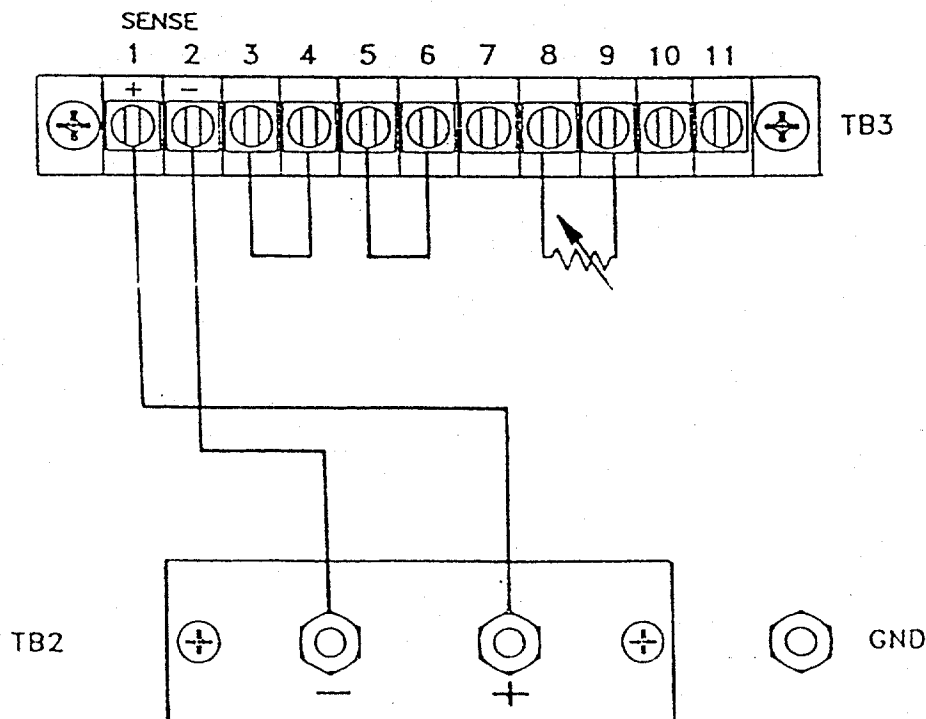


Figure 3-6 Resistance Programming Current Mode Connections

To adapt unit to the current mode, resistance programming configuration, proceed as follows:

1. Set POWER switch to OFF.
2. Remove the link between terminals 7 and 8, and rotate VOLTAGE controls to mid position.
3. Insert programming resistor between terminals 8 and 9.
4. Set POWER switch to ON.
5. Adjust COARSE VOLTAGE control until unit voltmeter indicates desired voltage limit value.
6. Set POWER switch to OFF. Connect load leads to output terminals. Observe Polarity.
7. Set POWER switch to ON. CURRENT mode indicator will illuminate.

CAUTION

If resistance programming is to be discontinued, set POWER switch to OFF, remove programming device, and reconnect link between terminals 7 and 8.

3.3.2 Signal Programming Current Mode

The procedure for adapting a DCR-B2 unit to current mode signal programming is identical to that for current mode resistance programming except that the signal source, (488 DAP or equivalent) rather than a programming resistor, is connected across terminals 8 and 9. A floating (ungrounded) signal source capable of sinking approximately 1.0 mA should be selected, and twisted wires should be used for the interconnecting leads. For a full range variation in unit output current, signal must have 0 to 400 mV volt range, or 0 to 10 volt range depending on SW1 setting. Terminal 8 is positive.

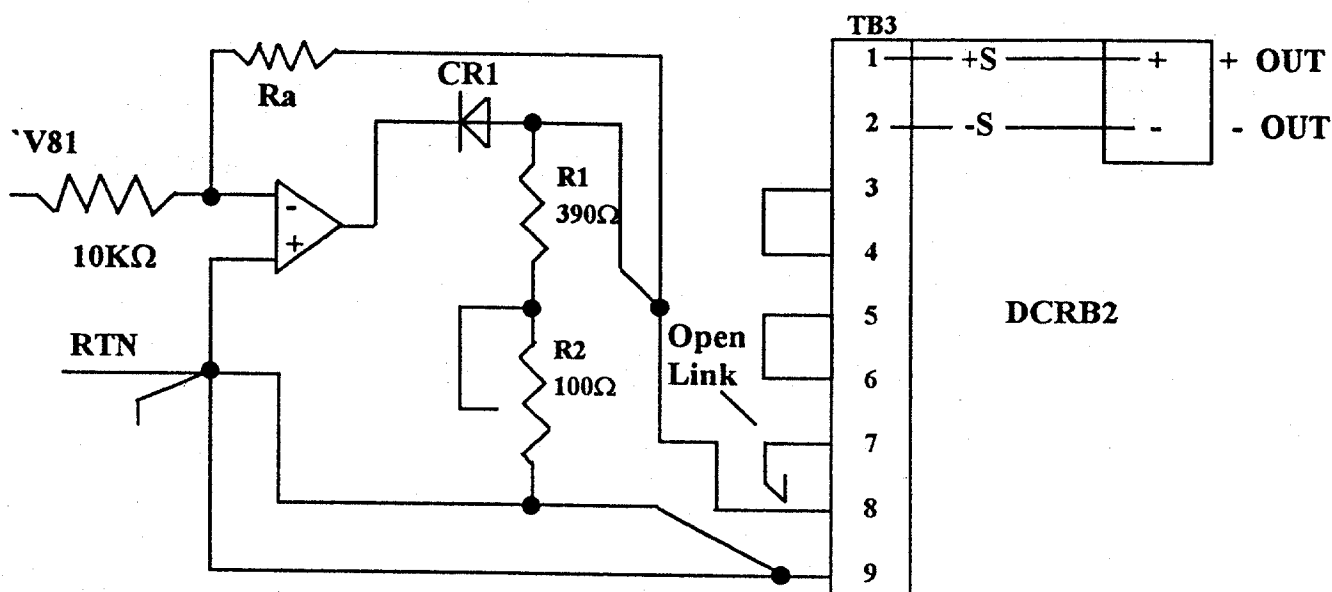
CAUTION

In 400 mV range setting, do not apply more than 400 mV to the DCR-B2, as the DCR-B2 current limit will be dangerously high.

3.3.3 Alternate Current Programming Method

This alternate programming method is recommended for the DCR-B2 power supply. These models are designed to accept control inputs of 400 mV. This diode-isolated current-sink method, while somewhat more complex to implement, provides a maximum current limit of 115% regardless of inadvertent errors in control input.

Figure 3-7 illustrates unit interconnection for the DCR-B2 power supply series.



R1 = 390W, 1/4W, 2%, 100 PPM

R2 = 100W, 1/2W, Trimpot, Cermet, 100 PPM or better

CR1 = 1N6263 Schottky Diode

Ra = Selected for range of V_{in} ($R_a = 4000/V_{in}$ in Koms)

Figure 3-7 DCR-B2 Interconnections (User defined Gain Ratio)

3.3.3.1 Calibration Procedure

1. Turn signal source ON, DCR-B2 power OFF.
2. Program signal source to zero output voltage.
3. Set the DCR-B2 panel voltage control fully clockwise (or to desired voltage limit).
4. Short the DCR-B2 output terminals and apply DCR-B2 input power.
5. Set zero current adjust potentiometer R17 on the DCR-B2 PCB to the point where the output current just drops to zero

NOTE

A small positive current is desirable to insure that the zero is not set too low.

6. Set signal source and DCR-B2 power OFF.
7. Disconnect the signal source from terminals 7 and 8 of the DCR-B2. Leave DCR-B2 output shorted.
8. Turn DCR-B2 output ON.
9. Set external pot (R2 in Figure 3-7) to obtain 115% of rated DCR-B2 output current.
10. Turn DCR-B2 power OFF; remove output terminal short.
11. Reconnect the signal source connections removed in step 7.
12. Turn the signal source and the DCR-B2 power ON.
13. Set the signal source for 400 mV output.
14. Vary the signal source output slightly until the rated full scale dc output current of the DCR-B2 is obtained. (e.g., DCR40-13B may require 385 mV for 13A output).
15. Using output voltage obtained in step 13, calculate the programming constant (Amps output per control supply input). For example: Assume that a voltage of 385 mV is required to obtain a full 13A output. The formula would be as follows:

$$\text{PROGRAM CONSTANT} = \frac{\text{DCR-B2 Amps Out}}{\text{Signal Source mV Out}} = \text{Amps/mV}$$

$$\text{(e.g.) } \frac{70\text{A}}{385} = 0.182 \text{ Amps/mV}$$

16. Remove DCR-B2 output short.

Overvoltage from the signal source will only produce 115% of rated output current.

3.4 PARALLEL OPERATION

DCR-B2 single phase units may be paralleled using either of two methods. One method uses a master/slave approach, and the other involves direct paralleling. Each method has its advantages. In master/slave operation the output voltage regulation is maintained, but only four units may be paralleled; with the direct method, there is no limit to the number of units which may be paralleled and no current derating is required. Output voltage regulation, however, does deteriorate.

3.4.1 Direct Paralleling (Figure 3-8)

The following steps outline the procedure for connecting two units in parallel (the same procedure may be extended to parallel as many units as desired):

1. At no load, adjust individual unit voltages to desired system output. Attempt to match individual unit outputs with FINE VOLTAGE controls.
2. Set power on each unit to OFF, and run load leads from units to load. Observe Polarity.
3. If remote sensing is to be used, connect sensing leads from units to load, also observing polarity. Use twisted wire or shielded pair for leads.
4. Set each unit POWER switch to ON.

The unit supplying the highest voltage will supply the load, as it is impossible to identically match the output voltages. If the load requirements exceed the setting on the CURRENT control, this unit will automatically cross over to current mode operation, and its output voltage will drop. The second unit will then assume that portion of the load rejected by the first. Any further increases in load will be supplied by the second unit up to its current limit setting. Regulation, therefore, will be the sum of the regulations of the units plus the difference in the voltage settings.

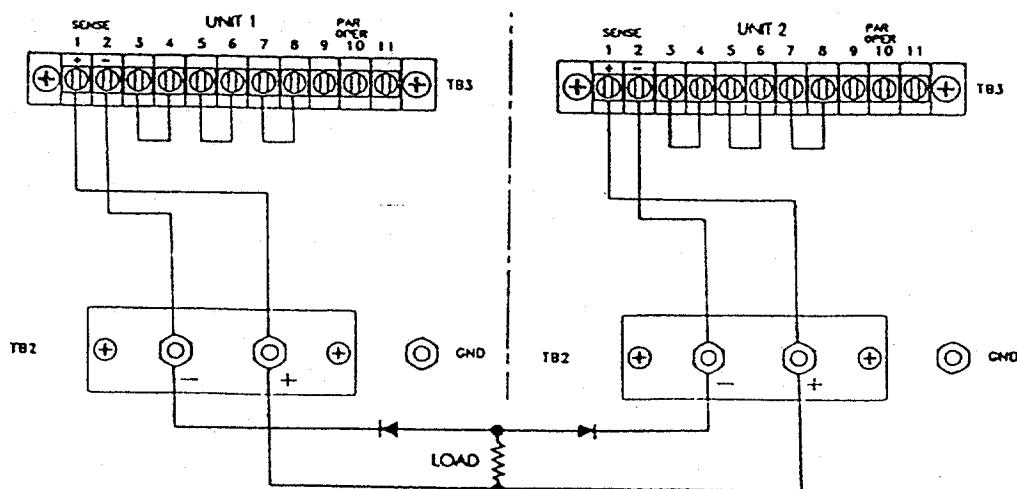


Figure 3-8 Direct Parallel Connections

For remote sensing, connect both unit + and - terminals directly to the load instead of output terminal board. OBSERVE POLARITY. Forward diode types listed in Table 3-3 for series connection will be adequate. Heatsinking is also necessary.

3.4.2 Master/Slave Paralleling (Figure 3-9)

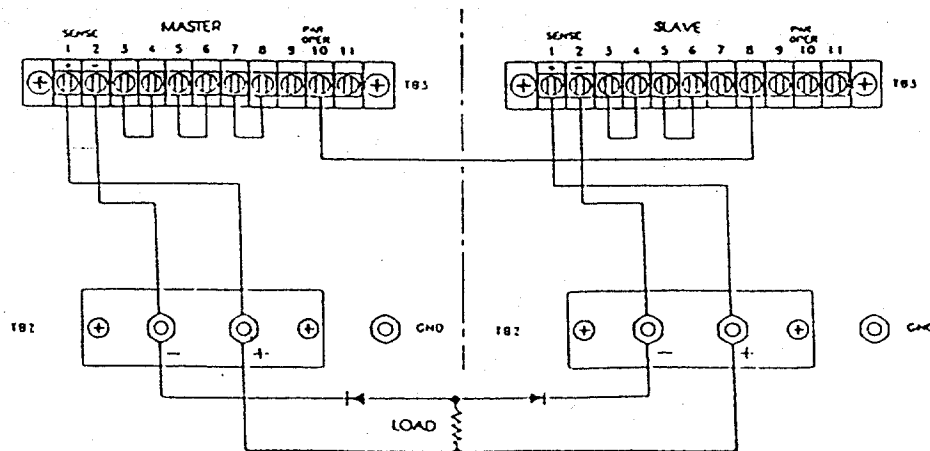
To connect two units in parallel, proceed as follows:

NOTE

Up to three slave units may be added by extending this procedure.

Switch S1 (Programming select) in each unit must be set for 400mV Programming mode.

1. With no load applied, set master unit POWER switch to ON, and adjust voltage to desired system output (plus total load lead drop unless in the remote sensing mode). Set unit power to OFF.
2. Connect load leads from both units to the load. If possible, use load leads of approximately equal length. Observe Polarity.
3. Disconnect link between terminals 7 and 8 on slave unit. Set slave voltage controls fully clockwise. Connect a wire between terminal 8 of the slave unit and terminal 10 of the master unit.
4. Set master unit POWER switch to ON, and then set the slave unit POWER switch to on.
5. Adjust control R17 (on Control PCB) to balance the output currents between the paralleled units.
Note that the units should be adjusted for equal output currents using the heaviest load (i.e., with both units operating near full load rating).



Forward diode types listed in Table 3-3 for series connection will be adequate. Heatsinking is also necessary.

Figure 3-9 Master/Slave Connections, Parallel Operation

3.5 SERIES OPERATION

3.5.1 Direct Series Connections (Figure 3-10)

The 20Vdc to 80Vdc DCR-B2 models may be directly series-connected for up to a total output of 200 Vdc. The 150 and 300 volt models may only have two units in series (for 300Vdc and 600Vdc total output respectively), and the 600 volt unit can not be series connected. Only like units may be connected in series. System regulation is the sum of the regulations of all units.

The procedure is outlined for connecting two units in series. Additional units may be connected by repeating the procedure for each.

NOTE

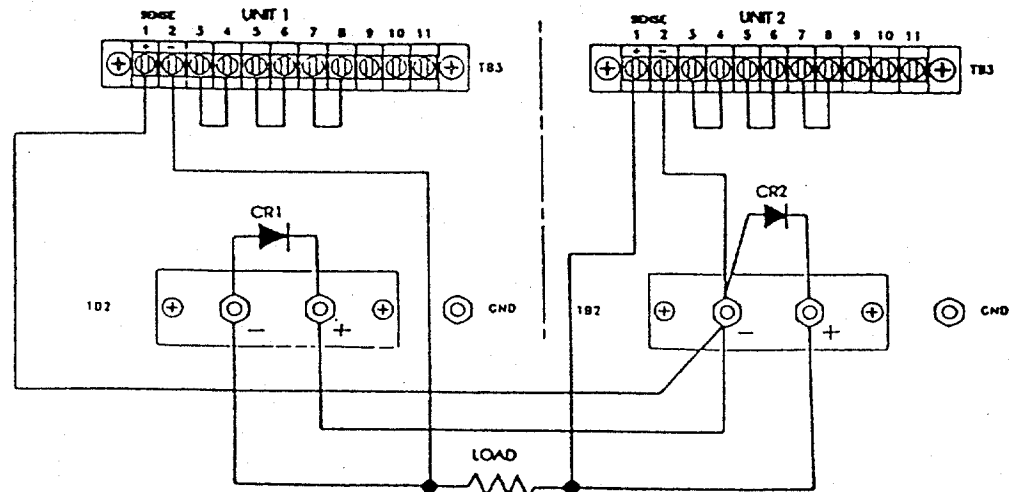
Series connected units may be adapted to resistance or signal programming. Be sure programming device is isolated from ground sufficiently to withstand maximum series operating potential.

1. With no load connected, set each unit to its desired output voltage level, and appropriate current limiting value.
2. Set the POWER switch of each unit to OFF.
3. Interconnect units as shown in Figure 3-10.

CAUTION

Rectifiers (and heat sinks where required) must be connected across the output terminals of each unit as shown in the figure. This will prevent damage to the output capacitors. Specific rectifier types are listed in Table 3-3.

4. Set unit power switches to ON. Units operate with independently adjustable outputs, and the power to each may be set ON or OFF separately.



See Table 3-3 for diode values

Figure 3-10 Direct Series Connections (Remote Sensing)

3.5.2 Master/Slave Connection (Figure 3-11)

The voltage range of a DCR-B2 power supply system can be increased by series connecting units up to a total rated output of 200 Vdc (150/300 volt models, two in series) in a master/slave configuration. Two 40 volt supplies thus connected provide 0 to 80 volt range capability with voltage programming necessary only on one unit. External components required are two wire-wound resistors (R_A and R_B in the figure), a 15 μ F bypass capacitor to eliminate noise feed-through and a shunt power rectifier across the output terminals of each unit.

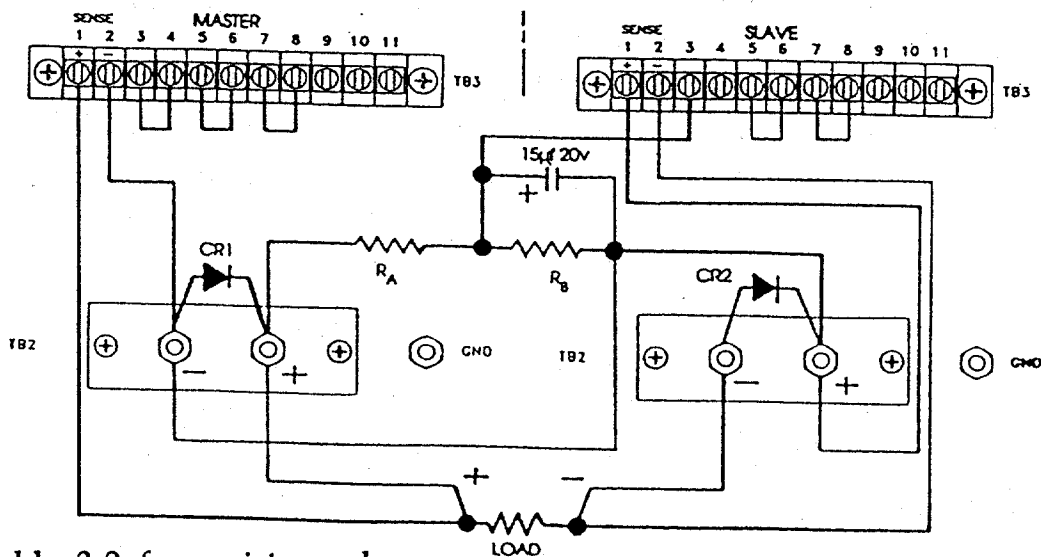
Assuming two supplies with the same output ratings are to be used, (consult factory for connecting dissimilar units), connect as shown in Figure 3-11. R_A and R_B are low TC, wire-wound resistors of 5 watts rating or greater. Resistance values for two identical units in series have been calculated for all voltage ranges in the DCR-B2 series, and are summarized in Table 3-2 for each application.

NOTE

For more than two units (with identical output ratings) connected in series, R_B remains 10K, and R_A is calculated using the formula:

$$R_A = 10^3 (V_o - 10)/X$$

where V_o is the voltage of the master supply, and X is the number of units in the system.



See Table 3-2 for resistor values
See Table 3-3 for diode values

Figure 3-11 Master/Slave Connections Series Operation

**Table 3-2 RA/RB Values--Two Identical
DCR-B2 Units Series Connected**

(V) RATED	RA	RB
20	5K	10K
40	15K	10K
60	25K	10K
80	35K	10K
150	70K	10K
300	145K	10K
600	295K	10K

Table 3-3 Recommended Rectifiers/Heatsinks Series Operation

DCR Model	Mfr. -Type	Sorensen Part No.	Heatsink Dim. Inches (mm)
20-115B2	IR - 1N4587 1N4587*	587571-1 587571-3	8 X 8 x 1/8 (203) x (203) x (3)
40-70B2	IR - 1N4587 1N4587R*	587571-1 587571-3	5 X 5 x 1/8 (127) x (127) x (3)
60-45B2	IR - 1N4587 1N4587R*	587571-1 587571-3	4 x 4 x 1/8 (102) x (102) x (3)
80-33B2	GE - 1N1184A 1N1184AR	587382-2 587382-7	3-1/2 x 3-1/2 x 1/8 (89) x (89) x (3)
150-18B2	GE - 1N1186A 1N1186AR	587382-3 587382-8	3 x 3 x 1/32 (76) x (76) x (.8)
300-9B2	GE - 1N1204A 1N1204AR*	587393-3 587393-7	2 x 2 x 1/32 (51) x (51) x (.8)
600-4.5B2	GE - 1N1206A 1N1206AR	587393-4 587393-8	2 x 2 x 1/32 (51) x (51) X (.8)

* Reverse-polarity rectifiers

With POWER switches OFF, connect each unit to an appropriate input power source (208/220/230 Vac). All units in the system can be connected through a common ac line OFF/ON switch. Proceed as follows:

1. Set the COARSE and FINE CURRENT controls of each unit fully clockwise.
2. Set the slave unit POWER switch to ON.
3. Set the master unit COARSE and FINE VOLTAGE controls fully counterclockwise, and set its POWER switch to ON.
4. Adjust master unit controls for desired system output level, which, in the case of two identical units, will be twice that indicated on its panel meter.

NOTES

-
- * System output for series connected units of different power ratings will be the sum of the individual unit voltages, at a maximum current level equal to that of the lowest unit current rating.
 - * In multiple unit operation, a greater time lag must be anticipated to reach full system output at each power turn on.

3.6 UNIT SHUTDOWN CIRCUIT

In the DCR-B2 line, shutdown is accomplished by connecting the remote shutdown (terminal 11 of TB3) to the positive sense (terminal 1 of TB3). This connection may be metallic, (reed relay or wire) or may be a transistor or optical coupler. The device must sink approximately 2 mA from terminal 11, such that pin 11 drops below approximately 10 volts relative to (+) sense. The relay (or transistor) used for shutdown should be rated for 20V. Since the transistor will be connected to the (+) sense output, this device must be isolated (floating) such as through an opto-isolator. An example of use is in the master/slave connection of two DCR-B2 power supplies. If the shutdown function is adapted to the master unit, the system output goes to zero; if applied to the slave unit, only that unit is affected and the system output is reduced accordingly.

3.7 OVP

The OVP is a fast-response silicon-controlled rectifier (SCR) crowbar circuit.

3.7.1 OVP Adjustment

The OVP operating point is set as follows:

1. With OVP potentiometer R18 (accessible through hole in front panel) fully clockwise, set unit power to ON, and adjust front panel control to the desired trip point as indicated on the unit voltmeter. It is recommended that the OVP trip level be selected at least 10% higher than the desired operating level, to prevent nuisance trip-out.
2. Adjust R18 slowly counterclockwise until the OVP trips. Leave R18 in this position.
3. Set unit power to OFF, and turn front panel voltage control counterclockwise away from the trip point.
4. Apply unit power and adjust the supply output voltage to the desired operating level.

3.7.2 Cautions

CAUTION

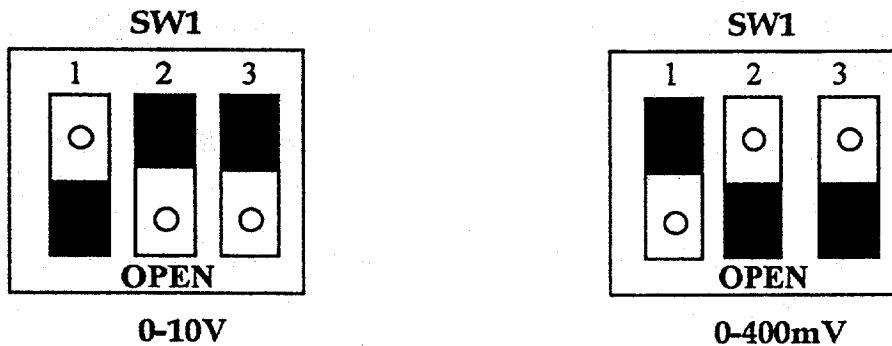
Parallel operation requires protective diodes. See Figure 3-8 and 3-9.

CAUTION

If the DCR-B2 is used with an energy storage type of load (e.g., batteries or large capacitor or inductor banks) protective diodes must be used in series with the negative load lead as shown in Figures 3-8 and 3-9. This precaution must be taken to prevent energy stored in the external device or load being absorbed by the OVP crowbar SCR. Due to the limited energy capabilities of the SCR, damage could occur to the SCR and, perhaps, the load.

3.8 CHANGEABLE CURRENT PROGRAMMING PARAMETERS

In the DCR-B2 Series, current programming parameters are changeable. There are two input ranges which are switch selectable for the current mode signal voltage. The first is the standard 0-400mV input voltage and the second is a new range of 0-10V. These ranges are chosen by utilizing the SW1 switch located on Control Board Number 1063005. Switch positions for each input range are shown below.



CAUTION

To prevent exceeding the input voltage range (per caution as stated in Section 3.3.2) check SW1 positioning before applying current mode signal programming voltage.

SECTION 4 THEORY OF OPERATION

4.1 INTRODUCTION

This section provides a basic discussion of unit operating principles, which may be used in conjunction with the troubleshooting chart provided in Section 5, to enable the logical and rapid isolation of unit faults. A brief description of the phase control principle is given first, followed by a block diagram analysis of system functions. The function of each section is then described in detail.

4.2 PHASE CONTROL PRINCIPLE

The sinusoidal wave in Figure 4-1 represents normal ac line voltage. If, by some means, conduction of this voltage is delayed, the average voltage output will be reduced. Control of the delay then results in control of the average voltage. This is phase control. The silicon controlled rectifier (SCR) acts like a switch, activated by the delay circuit, to provide the phase control. The delay is expressed in degrees and is known as the firing angle. Figure 4-1 shows firing angles of 60° and 120° .

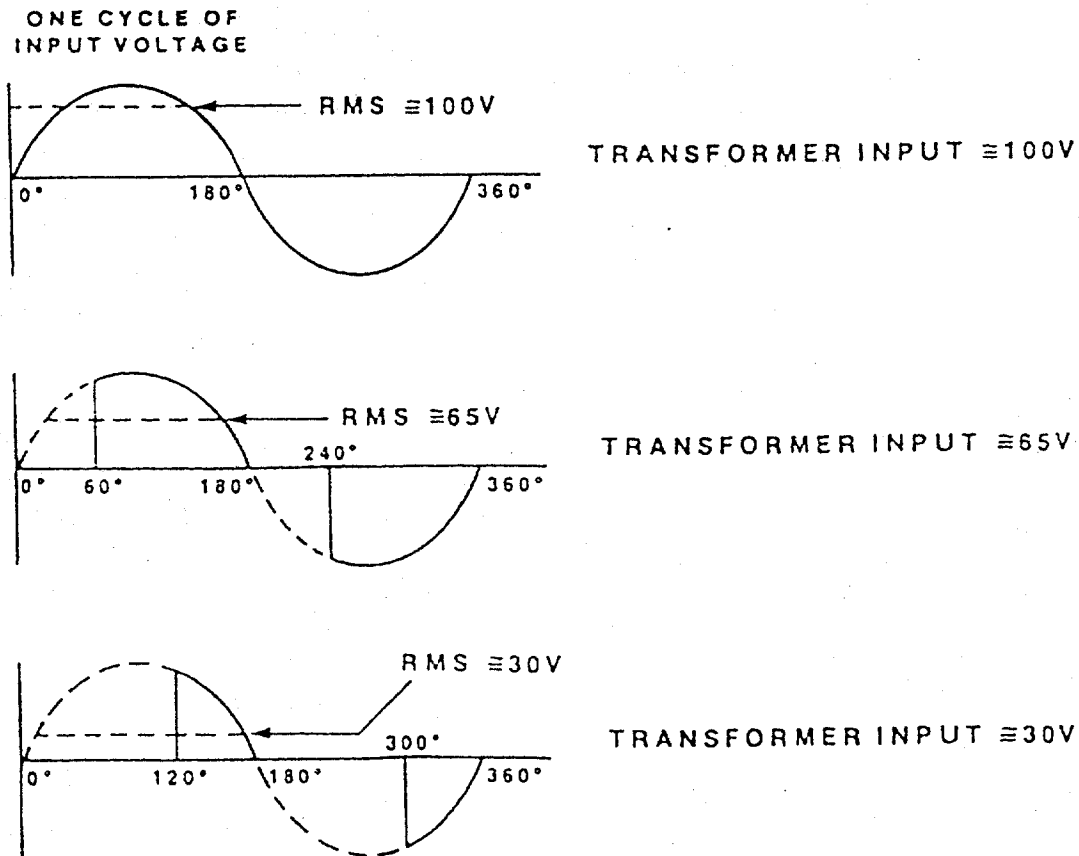


Figure 4-1 Phase Control Firing Angles

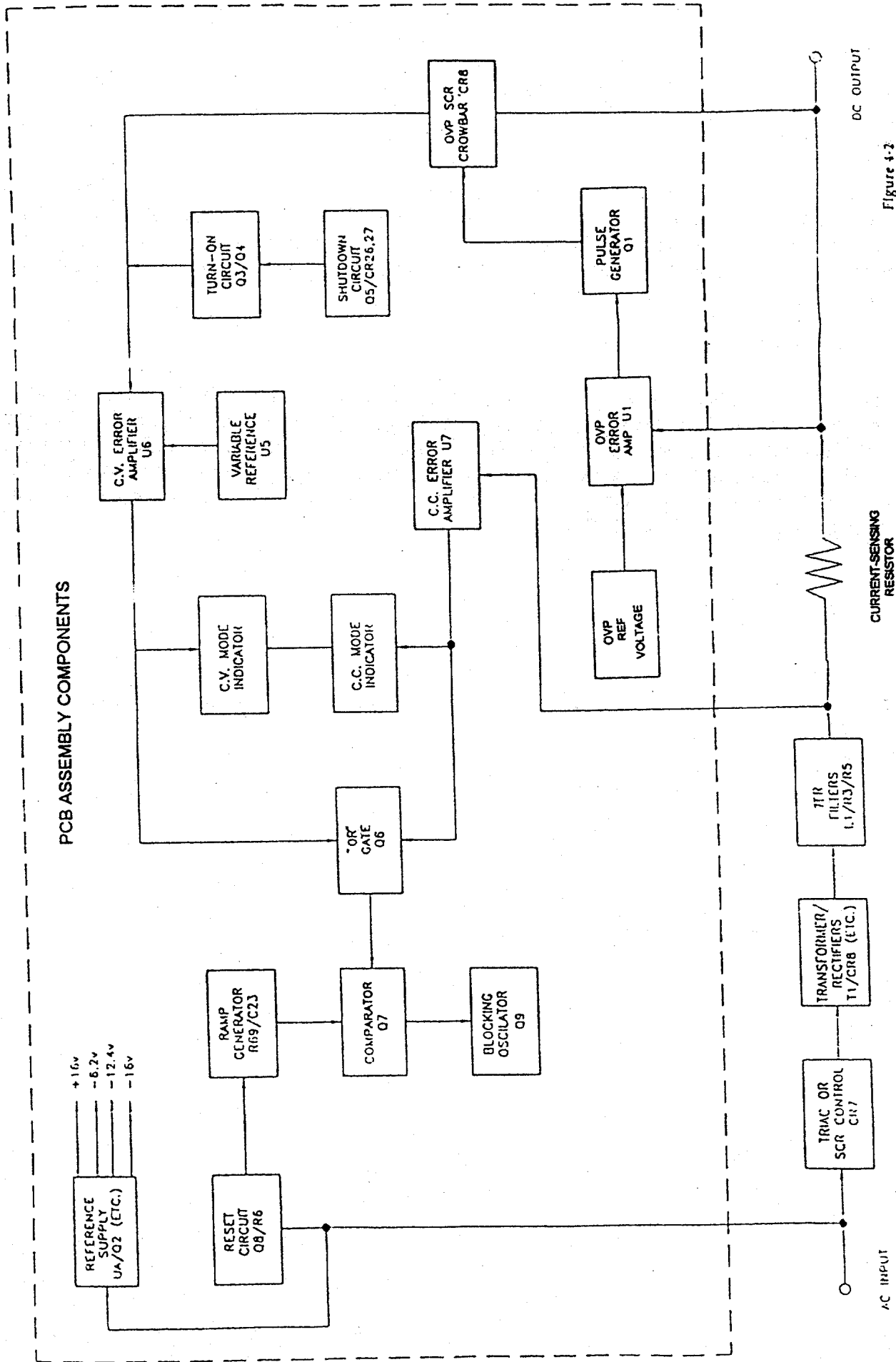


Figure 4-2
DCR-02 Functional
Block Diagram

4.3 BLOCK DIAGRAM ANALYSIS (Figure 4-2)

The ac input voltage is first applied to CR7 (Triac), which is in series with power transformer T1. CR7 functions with the control circuits to form a feedback loop which prevents a change in output voltage when either the line or load changes.

To accomplish this, the control circuits issue a phase adjusted firing pulse to CR7 once during each half cycle of the input ac voltage. These circuits continuously sample the output voltage, which establishes the precise time at which the firing pulse is to be generated. The phase controlled ac voltage is stepped up or down by power transformer T1, and coupled through a full-wave rectifier and filtering circuits to the output terminals.

Feedback signals from the output back to CR7 originate in the constant voltage/current error amplifiers U6/U7. In the constant voltage mode, U6 continuously compares the supply output with a reference voltage generated by a variable reference programming circuit, U5. A difference in these voltages appears as an error signal, which is delivered to amplifier U6. This dc error signal is applied to Q6 (comparator input #1). A sawtooth ramp voltage, generated by Q8, R69 and C23, is applied to Q7 (comparator input #2). The comparator output (across R62) sets the conduction angle of blocking oscillator Q9. The duration of Q9 conduction is directly proportional to the error signal, and its output triggers D31 into conduction. D31 acts as a switch, whose firing angle is dependent on the magnitude of dc error signal, thus controlling the overall supply output.

Similarly, in the constant current mode, changes in line or load are sensed by R12, in series with the output. It is then amplified by U7, and applied to Q6 comparator input. Output control from this point is essentially the same as in the constant voltage analysis, above.

4.4 DETAILED CIRCUIT DESCRIPTION

NOTE

All component designators are referenced to PCB schematic diagram page 6-13 unless otherwise noted.

4.4.1 Reference and Bias Supplies

The precisely regulated voltage required for operation of the control circuitry is produced by a reference supply consisting of zener diodes D9/D10, operational amplifier U4, passing stage Q2, transformer T2 and center-tapped full wave rectifier D35/D36/D37/D38. (See main schematic).

The reference supply output appears across a comparison bridge composed of divider R31/R32, zener D16, and R77. Error signals are sensed across this bridge and amplified by U4. The variable impedance characteristic of passing stage Q2 changes the level of absorbed voltage across the stage, maintaining the output at a precisely controlled negative 12.4 volts (Figure 4-3).

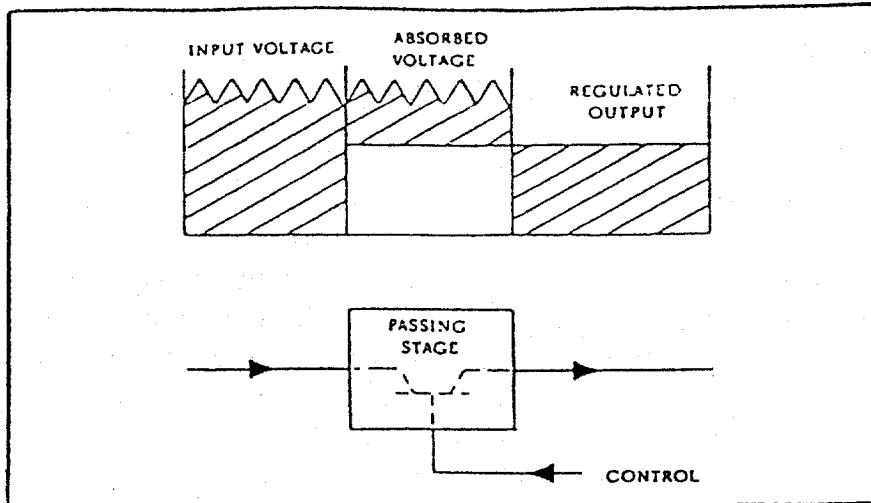


Figure 4-3 Passing Stage Principle

To illustrate circuit operation, assume an increase in the TB2 (page 6-4) supply output. Pin 2 of U4 will become more negative, and the output at pin 6 more positive, tending to turn Q2 off. The reduction in drive current increases the impedance of Q2, and consequently its absorbed voltage, resulting in precise regulation of reference supply output.

Several other bias supplies are used to power the control circuitry:

1. +20 volts from D7. Note that there is no filtering on this 20 volt output. This signal is used as a time reference to the ac line. The +20 volt source is then gated through D21, and filtered by C18 to provide the +20 Vdc primary operating power for the control PCB.
2. The 16 volts across C18 is fed to R47 and D8, to generate and precisely regulate the +11.7V for the current amplifier reference voltage.
3. +30 Vdc unregulated (D9 and D10 on the overall schematic) is used to operate the current/voltage mode lamps.

4.4.2 Voltage Mode Section

Primary components of this circuit include constant voltage error amplifier U6, variable reference voltage programmer U5, and emitter-follower stage Q6. The circuit functions as follows:

Pin 3 of U5 is connected to plus sense. Front panel voltage controls R10/R11 function as variable feedback resistances from U5 pin 6 to pin 2. The negative 12.4 volt reference through R39/38/37 establishes the desired programming current range, so that 0 to 10 volt signal is obtained at pin 6 of U5.

The main error amplifier is U6. Pin 4 of U6 is at virtual dc ground since pin 5 is at ground (+sense). Thus, the current through R74 can be varied from 0 to 1 milliamperere. This current, through R79, programs the supply to the desired output. U6 pin 5 senses this output, and compares it to the voltage developed at U6 pin 4. The resultant is an error signal, amplified by U6, and coupled to R61 through the emitter of Q6.

An illustration of voltage mode operation: An increase in system output drives U6 pin 4 more negative. U6 pin 11, and thus the Q6 emitter also become more negative, creating the error voltage necessary to retard the firing angle of D31 through T1/Q9 action as noted in the block diagram analysis.

C15/R44 establishes ac loop stability, aided by C16/R46.

4.4.3 Current Mode Section

The primary component in this section is constant current amplifier U7. The 11.7V reference voltage is divided down by bridge dividers R20/R21 and R24/R19 to U7 pins 5 and 4 respectively. The resultant voltages are referenced to the positive output, through a current sensing resistor (R21), with R13/R14 serving as the front panel current adjust potentiometers.

R46/C17 establishes ac loop stability. C11/R36 (variable) is a secondary stability network used for inductive load compensation.

R22/C7 acts to prevent rapid changes in the phase delay angle, caused by large transients. This protects the power components from overstress.

Trimmer R17 is used to adjust zero output current (compensating for current tolerances and offset voltage of U7).

Trimmer R18 is used to adjust for maximum current setting (compensating for tolerances in panel pot R13 and current shunt R12).

An illustration of current mode operation: If the output current approaches the current limit setting, the voltage across the sensing resistor becomes larger. This is seen as a positive error voltage at U7 pin 5, which is amplified and applied to the U7 output, pin 10. The output of U7, pin 10 (emitter) is passed through D20 to the base of the output stage of U7 at pin 13. The injected current causes the collector of U7, pin 11 to fall, reducing output. (See Voltage Mode section, para. 4.4.2, for additional details).

4.4.4 Ramp Generator, Reset Circuit and Comparator

The ramp generator consists of R69 and C23. The ramp voltage at the junction of R69/C23 is coupled through D30 to the base of Q7. This voltage starts at a maximum level, and decreases exponentially until reset by Q8 at 8.3 millisecond intervals (each 1/2 cycle of line voltage). The reset pulse for Q8 is generated through D7/R48 as follows:

The reset circuit consists of Q8 and R68. The full wave rectified ac input from T2 is impressed across D7/R48. D7 clamps the base of Q8 at its zener level, keeping it shut off (D21 is forward biased). As the impressed voltage drops toward zero, the zener voltage follows. D21 becomes reverse biased. Q8 then turns on from base bias through R68, discharging C23 when the line voltage crosses zero.

The comparator consists of Q7, Q6, D30, R61, and R62. Comparator Q7/Q6 compares the dc signal from either the voltage or current mode amplifier (applied to Q6) with the ramp generator voltage. The varying output of Q7 (across R62) establishes the conduction angle of blocking oscillator Q9.

4.4.5 Blocking Oscillator Circuit

Q9 functions as a switch, providing the triggering voltage for D31 and D32 proportional to the error signal received from the comparator circuit. The blocking oscillator circuit functions as follows: Assume that at a given time the Q7 dc emitter voltage is several volts below the reference level provided by the reference supply circuit (paragraph 4.4.1). At a point when the ramp voltage, appearing at the base of Q7, is more negative than that on its emitter, Q7 conducts. This drives the base of Q9 positive, causing Q9 to conduct. As its collector current I_c increases, regenerative action occurs through pulse transformer T2, forcing Q9 into saturation. I_c continues to increase until T2 core saturates. Then T1 voltage decreases, removing Q9 base current. At this point Q9 comes out of saturation. The cycle is then repeated. The output of the pulse generator is a series of narrow pulses, continuing until the end of the line half-cycle.

4.4.6 Turn-On and Shut-Down Circuits

Primary components of the turn-on circuit are Q3, Q4, R56, R55, D28 and C22. Circuit operation is as follows: When power is initially applied to the unit, the bases of Q3/Q4 are driven positive, due to C22 coupling the rising voltage of V_{cc} . Q3 and Q4 are thus in saturation. The resultant negative voltage at the Q3/Q4 collector maintains voltage error amplifier U9 and the blocking oscillator/mixer circuits at cut off.

This action inhibits the output of the power supply from coming up. As C22 charges, the supply output will increase exponentially. Q3/Q4 gradually come out of saturation until the voltage across C22 reaches the point where they are shut off. The supply is then functioning in its normal manner.

The shut-down circuit, consisting of Q5, R58, R59, and D26/D27, cuts off the unit output when the cathode of either diode is connected to the plus sense connection. The circuit function is to actuate Q5, which turns Q3 and Q4 on. When the connection is removed, the power supply returns to normal, with the slow start described above.

D27 (TB3 pin 11) is available for customer use to shut down the dc output. Terminal 11 can be connected to +sense (TB3 Pin 1) by either an isolated relay contact or an open collector logic signal (sinking approximately 0.2mA).

D26 is used internally to shut down the DCR-B2 output when the OVP is tripped. Refer to Figures 6-1 and 6-2.

4.4.7 Power Section

The input ac voltage is applied to the primary of power transformer T1 through an SCR, (CR7). The output is rectified by a full wave bridge, and filtered by a Pi network with a damping resistor (R3). The filtered dc is then applied to the output terminals.

4.4.8 Overvoltage Protector

The OVP consists of a fast-response silicon-controlled rectifier crowbar (CR8). A reference voltage (+12V) is generated by zener D1 and R3. This reference voltage is compared to the output voltage in a bridge circuit, by the ratio of R6 to R16 plus R18 (adjust pot). The bridge output is applied to U1, pins 3 and 4. Assume that the resistor ratio is set (by adjust pot R3) to produce a balanced bridge at a specified output voltage. If the output voltage exceeds this preset value, U1, pin 3 will be driven positive relative to pin 4. The result is a positive output at pin 9 to turn on Q1. Q1 applies the +30V unregulated voltage (at P1-1) to the primary of T1. The induced current in the secondary of T1 provides a trigger for the SCR crowbar. D13 activates the SCR, causing a crowbar function across the power supply output terminals. D12 then conducts, shutting down the pulse generator (via J4-4 on the Control PCB).

The SCR recovers as soon as the output voltage is dropped, and removes the crowbar current. R8 supplies holding current to D13 to hold the crowbar on.

To reset the OVP, power must be removed from the power supply input. After a moment to reset, lower the output voltage control, and re-apply power to the input.

4.4.9 Indicator Lamps

DS2, which indicates Constant Voltage mode, is wired across P1-9 and P1-19 as shown on the Control PCB schematic, page 6-13. DS3, which indicates Constant Current mode, is wired across P1-14 and P1-19.

U8 is an operational amplifier used to drive DS2 and DS3. The lamps and IC4 are powered from the +30V supply.

The input signal to U8 determines which lamp lights, as follows:

A. Constant Current Mode (Current Limit) DS3

The input terminals of U8 are pins 2 and 3. Pin 2 is driven positive relative to pin 3 when the current amplifier (U7) output (pin 10) is in control (i.e., during current mode operation). Pin 2 positive signal will drive U8 output (pin 6) low (towards the +30V return). Pin 6 acts to reduce the voltage on DS2 and increases the voltage on DS3. DS3 is turned on brightly and DS2 is turned off.

B. Constant Voltage Mode (DS2)

During Voltage Mode operation, U8 pin 2 polarity reverses due to loss of U7 pin 10 voltage, so that U8 pin 6 output is driven high (towards +30V). This turns on DS2 and turns off DS3.

4.4.10 Changeable Current Programming Parameters

0-400 mV Operation:

Dual range current mode signal programming is controlled by SW1, U3, U2 and associated parts. The signal programming voltage is applied between TB3-8(+) and TB3-9(-) with the jumper between TB3-7 and TB3-8 removed. For 0-400mV signal control voltage, SW1 is closed. This directly connects TB3-8 to R17 as in the standard DCR-B2 current mode signal programming. SW1-2 and SW1-3 are open.

0-10V Operation:

For 0-10V signal control voltage, SW1-1 is open; SW1-2 and SW1-3 are closed. Thus, the input voltage goes to pin U3B-5 via R12 and R11. D3 and R12 limit the input voltage to 15V maximum. R11, R9, R10 and U3A (pins 1,2,&3) comprise an inverting amplifier with a gain of 20-25. The gain inverting amplifier is set so that the output at TP4 is equal to .4V with $V_{in}=10V$ (approx. 24). As input voltage goes from 0-10V, the output voltage goes from 0-400mV.

U2 and associated parts allow the front panel control pots to output a variable voltage even when they are disconnected from the control circuitry, ie, TB3-8.

SECTION 5 MAINTENANCE

5.1 GENERAL

This section provides troubleshooting data, periodic servicing, calibration, performance and hi-pot testing procedures and information. The troubleshooting data should be used in conjunction with the schematic diagrams and Section 4 which outlines the principles of operation. Any questions pertaining to repair should be directed to the nearest Sorensen representative or to the factory. Include the model and serial numbers in any correspondence. Should it be necessary to return a unit to the factory for repair, prior authorization from Sorensen Company must be obtained.

5.2 PERIODIC SERVICING

Whenever a unit is removed from service, it should be cleaned, using naphtha or an equivalent solvent on painted surfaces, and a weak solution of soap and warm water for the front panel. Compressed air may be used to blow dust from in and around components.

5.3 TROUBLESHOOTING

Table 5-1 provides a list of malfunction symptoms along with a tabulation of the possible cause(s) for each symptom. Note that the failure of a single component may result in a chain reaction effect. As additional aids to troubleshooting, voltage checkpoints have been designated on the printed circuit schematic diagram.

5.4 CALIBRATION

Following repair, the unit should be recalibrated to insure that replacement components have not altered performance. Refer to Table 5-3 for unit calibration specifications. The following is the calibration procedure to ensure that full rated voltage output is available:

1. Make sure input power has been removed from unit and circuit breaker set to "OFF" position.
2. Set SW1 on PCB to "ON", "OFF", "OFF".
3. Adjust COURSE VOLTAGE knob to midpoint and COURSE CURRENT fully clockwise.
4. Set power to unit and turn circuit breaker "ON".
5. Check to see if output is approximately 1/2 rated voltage.
6. Adjust COURSE VOLTAGE fully clockwise. With maximum voltage pot (R37 on PCB) adjust output voltage to 105% of rated.

7. Set output to rated voltage with four significant digits.
8. Set both COURSE and FINE CURRENT knobs fully counter clockwise.
9. Verify unit has gone from voltage mode to current mode by noting a significant drop in output voltage, by illumination of DS3.
10. Set FINE CURRENT adjustment to midpoint and apply short circuit.
11. Using minimum current Adj. (R17 on PCB) adjust output current to exactly 0 amps.
12. Adjust FINE CURRENT fully clockwise; slowly adjust COURSE CURRENT fully clockwise.
13. Using maximum current Adj. (R18 on PCB) adjust output current to 115% of rated.
14. Turn circuit breaker "OFF".
15. Set SW1 to "OFF", "ON", "ON".
16. Turn COURSE CURRENT knob counter clockwise fully.
17. Turn circuit breaker "ON".
18. Slowly Adj. COURSE CURRENT knob fully clockwise.
19. With short circuit still applied, set current using 10V gain Adj. (R75 on PCB) to 115% of rated current.
20. Remove short circuit.
21. Turn unit "OFF". Reset SW1 to "ON", "OFF", "OFF".
22. Turn unit back "ON".
23. Apply rated load with rated voltage out.
24. With voltmeter (positive lead on inside of R21 and negative lead on cathode of D34) use R7 on front panel to set 400 MV, $\pm 1\%$. Reset current meter with R6.
25. Apply pot lock to all pots, also R6 & R7.
26. Calibration complete.

Table 5-1 DCR-B2 Troubleshooting

1	No output (voltage mode)	<ul style="list-style-type: none"> a) Wrong input voltage b) Open fuses and circuit breaker* c) Reference voltages (check levels) d) Defective U6 or U5 e) Collector to emitter short on Q8, Q6, Q3, Q5 or Q4 f) Q9 open or shorted
2	Fuse opens or circuit breaker trips	<ul style="list-style-type: none"> a) CR7 shorted* b) Input capacitors shorted* c) D32, D33 shorted or open*
3	High output voltage (meter pointer pegs)	<ul style="list-style-type: none"> a) Sensing or programming leads or link open* b) Defective U6 or U5 c) Q7 shorted collector to emitter d) Q6 open collector to emitter e) CR7 shorted*
4	No output (current mode), or unit will not current limit	<ul style="list-style-type: none"> a) Defective U7 b) C7 shorted c) D20 open d) Shorted COARSE CURRENT potentiometer* e) Collector to emitter short on Q8, Q6, Q3, Q5 or Q4 f) Q9 open or shorted
5	Output oscillates (current mode)	<ul style="list-style-type: none"> a) Potentiometer R36 on unit PCB improperly adjusted

*Chassis components (ref. page 6-6)

5.5 PERFORMANCE TESTING

Sensitive instruments like the DCR-B2 require rigorous testing methods if a true performance evaluation is to be made. Wherever possible, twisted leads should be used with test equipment to reduce stray pickup. At the power supply terminal board, these leads must be firmly held by the terminal screws. Alligator clips and similar types of connectors are not suitable. Grounding techniques in which more than one device in the setup is grounded may introduce extraneous ripple that, although unrelated to the power output ripple, is displayed on the test oscilloscope.

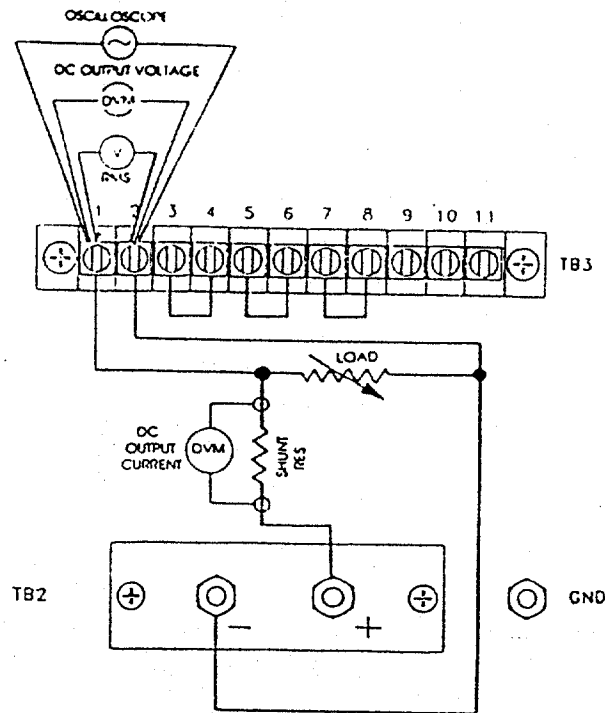


Figure 5-1 Performance Test Setup

5.5.1 Voltage Mode Regulation and Ripple

To check voltage mode regulation and ripple, proceed as follows:

1. Connect a sensitive digital voltmeter and an RMS ac voltmeter across unit output terminals per Figure 5-1. Select a current shunt per Table 5-2 with a DVM for current output readings.

Use an autotransformer for AC line input with a current rating that exceeds the maximum unit input current called out in the unit specifications.

NOTE

Input devices such as autotransformers or line regulators can distort the input wave sufficiently to adversely affect performance measurements.

2. Apply high ac line input per specifications and remove load. Set the POWER switch to ON.
3. Rotate COARSE CURRENT control fully clockwise.
4. Use COARSE and FINE VOLTAGE controls to obtain rated output voltage. Note DVM reading after a few minutes of warm up time.

5. Decrease ac input voltage to low line specification. Output voltage change should not exceed limits specified in Table 5-3.
6. Close load switch and adjust load for rated current. Using high ac line specification and full load, verify ripple meets specification.

5.5.2 Current Mode Regulation

To check current mode regulation, proceed as follows:

1. At no load, adjust output to maximum rated voltage, and set COARSE CURRENT control fully clockwise.
2. Connect a sense resistor (Table 5-2) or a precision meter shunt in series with a variable load across the output terminals.
3. Connect input power at low line per unit specifications. Apply load until rated current of supply is reached. (Unit has voltage mode indicated.) Adjust COARSE CURRENT control until CURRENT mode indicator is lit and output voltage drops at least 5% of full scale value.
4. Connect a digital voltmeter across the sensing resistor, and note the indication.
5. Increase input voltage until voltage is at high line, and reduce the load resistance to zero (short). Note indication on the DVM. Change in voltmeter reading (expressed in millivolts) should be divided by sense resistor value to obtain regulation in milliamperes. Limits are provided in Table 5-3.

5.5.3 Transient Response

Test for transient response as follows:

1. Connect an oscilloscope across the unit output terminals.
2. Set unit POWER switch to ON. Adjust COARSE VOLTAGE control for rated output, and COARSE CURRENT control fully clockwise.
3. Apply half load, and then abruptly apply full load (or switch from full load to half load). Return to steady state operation should occur within 50 milliseconds (typical). See Table 5-3 for typical transient deviation voltage values.

NOTE

Load switching time should be less than 3 milliseconds.

Table 5-2
Sensing Resistor Values (Current Mode Regulation Check)

DCR MODEL	SENSE RESISTOR (Ohms)
20-115B2	3.4, 50W
40-70B2	5.7, 50W
60-45B2	2.2, 50W
80-33B2	3.0, 50W
150-18B2	5.5, 50W
300-9B2	11.1, 50W
600-4.5B2	22.2, 50W

Table 5-3
Unit Calibration Specifications

DCR Model	Regulation		Ripple Volt Mode (mV)	Transient Deviation (Volts)	Maximum Compliance (Vdc)	Cur. Mode Upper Lim. Set Pt. (A)
	Voltage Mode (mV)	Current Mode (mA)				
20-115B2	6	288	65	1.2	20	132.25
40-70B2	12	175	90	2.4	40	80.5
60-45B2	18	113	125	3.6	60	51.75
80-33B2	24	83	150	4.8	80	37.95
150-18B2	45	45	300	9.0	150	20.7
300-9B2	90	23	700	18	300	10.35
600-4.5B2	180	12	1200	36	600	5.175

5.6 HI-POT TEST PROCEDURE

High potential test procedures have been carefully carried out at the factory. These units are 100% tested and should not require further testing in the field.

CAUTION

High potential test can overstress or destroy the power semiconductors in this power supply if improperly applied.

Isolation measurements may be made using a standard VOM (Simpson 260 or equivalent) on the highest resistance scale available.

If it is essential to use the high potential test method, please contact the factory for information on special precautions that should be taken.

CAUTION

Sorensen cannot be held liable for any malfunctions resulting from the application of a high potential test (greater than 100V). See standard Sorensen warranty.

SECTION 6 DRAWINGS AND PARTS LISTS

6.1 GENERAL

This manual contains schematic diagrams, PCB parts location drawings, and replaceable parts lists. The parts lists are keyed to the applicable schematic diagrams.

6.2 TABLE HEADINGS DEFINED

6.2.1 Circuit Symbol

This is an alpha-numeric identification of the component as called out on the unit drawings.

6.2.2 Sorensen Part Number

This number should be used when ordering parts directly from:

SORENSEN
Sales & Technical Support
9250 Brown Deer Road
San Diego, CA 92121-2294
1-800-525-2024
Tel: (858) 450-0085
Fax: (858) 458-0267
E-mail: sales@sorensen.com
www.sorensen.com

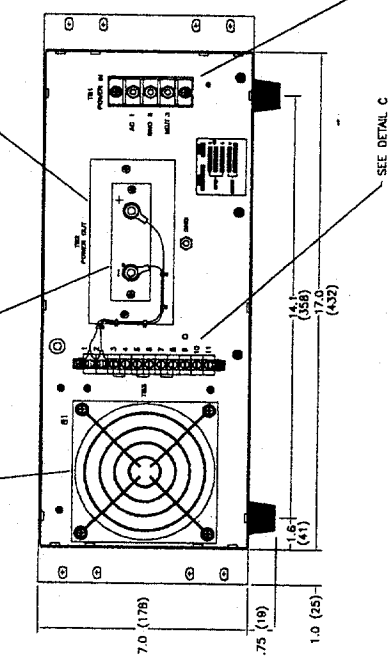
ZONE	REV	DESCRIPTION	DATE	APPROVED
A		RELEASED TO PROD. PER EO	AR 11/29/88	
A1		ADDED SLIDE HOLES & DIM.	AR 12/19/88	
A2		ADDED DIMENSION	AR 12/28/88	
B		REVISED PER EO 90A023	AR 1/19/90	
C		REVISED PER EO 90A431	AR 6/4/90	
C.1		ADDED DIM. NO. E.O.	AR 8/2/90	
D		REVISED PER ECN N950396	MS 5/25/95	

1 2 3 4 5 6 7 8

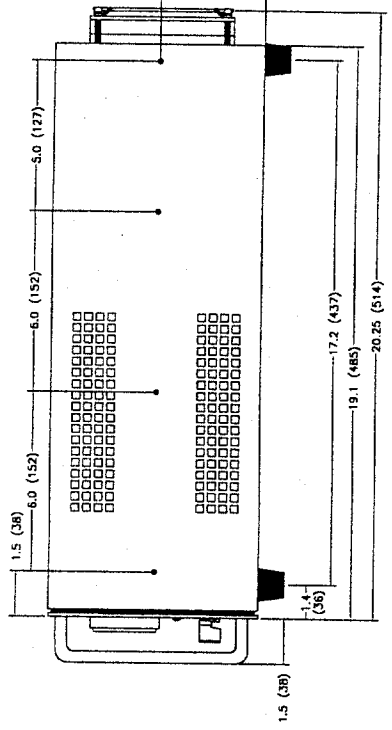
FAN NOT USED ON ALL MODELS

SEE DETAIL B

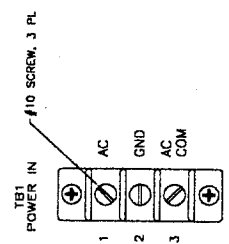
TRANSPARENT COVERS, 3 PL



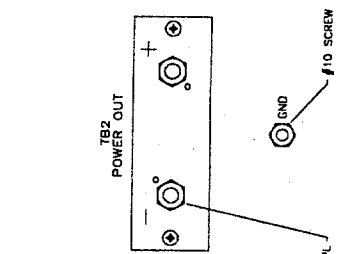
VIEW E-E



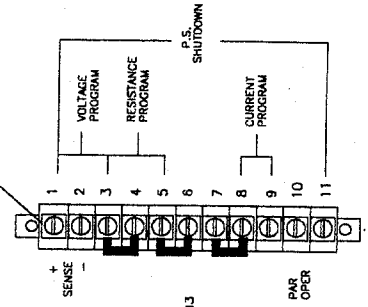
VIEW D-D



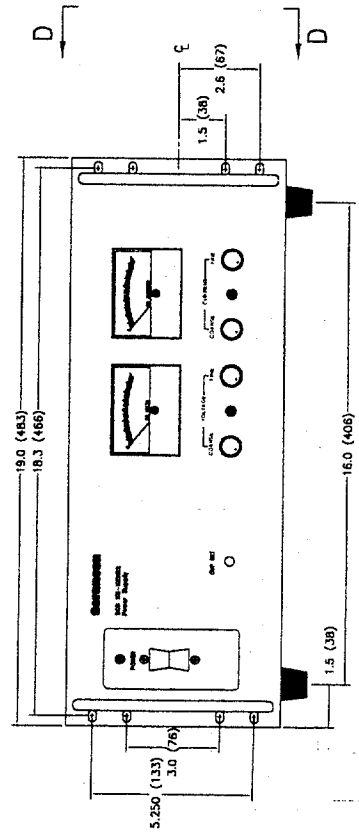
DETAIL A



DETAIL B

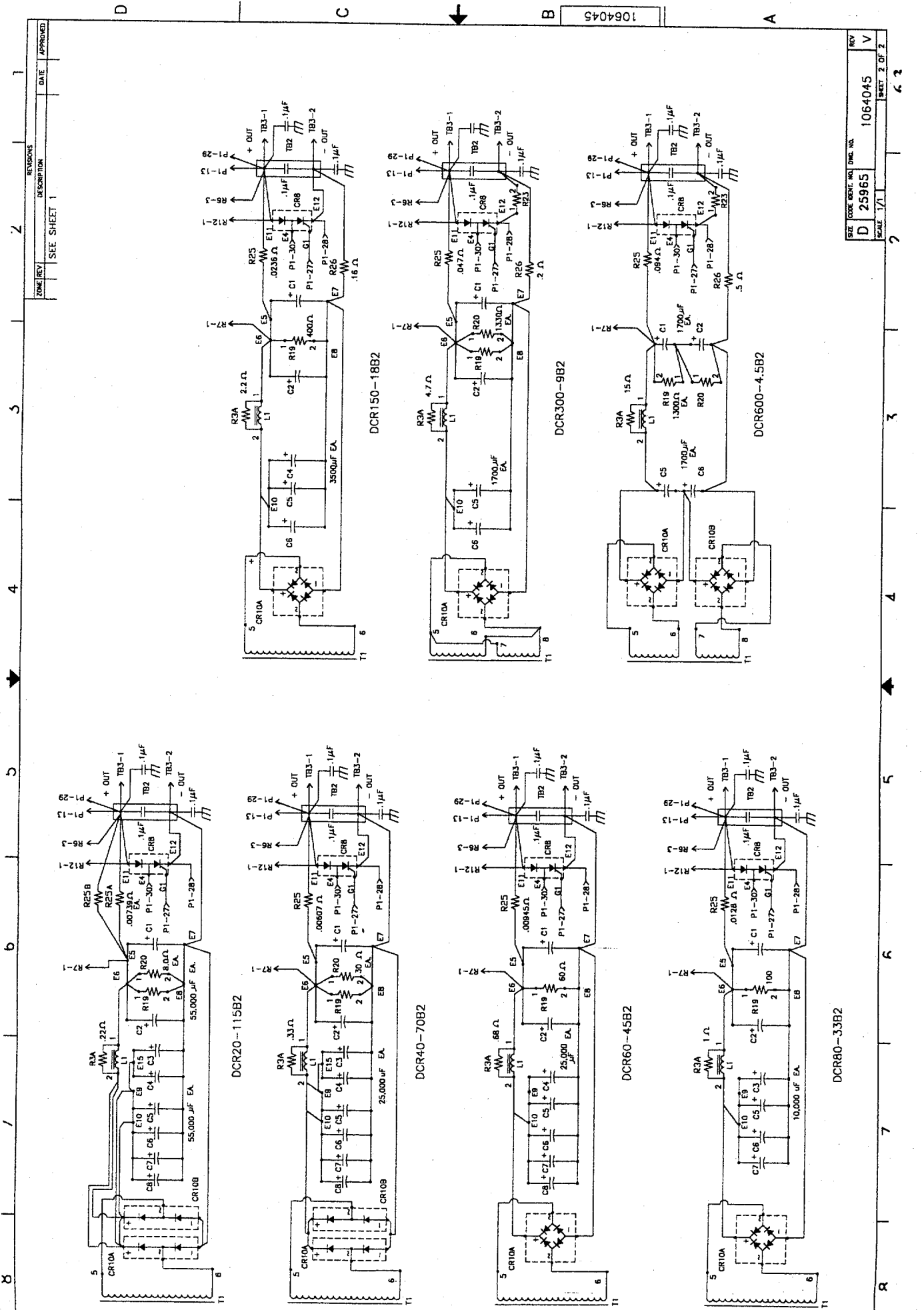


DETAIL C



		UNIT CONTROL DRAWING DCRB 7"	
CONTRACT NO. FIRST MADE FOR APPROVAL DATE DRAWN A. RUBIN 11/29/88 CHECKED DESIGNED DATE-REL.	UNLESS OTHERWISE SPECIFIED DIMENSIONS ARE IN DECIMALS FRACTIONS IN INCHES TOLERANCES UNLESS NOTED ARE: .005 & .010 ± 1/24 E 1/2 DO NOT SCALE THIS DRAWING MATERIAL: DCRBZ 7" USED ON	SEE DRAWING FOR DIMENSIONS FOR ORIGINAL EQUIPMENT FINISH	SIZE D 25965 SCALE 1/2
1064088		1064088	
1064088		1064088	

1 2 3 4 5 6 7 8



ZONE	REV	DESCRIPTION	DATE	APPROVED
		SEE SHEET 1		

REV	1064045	V
DWG. NO.	1064045	
SCALE	1/1	
SHEET	2	OF 2

1064045

REV

1064045

V

DWG. NO.

1064045

SCALE

1/1

SHEET

2

OF

2

ZONE	REV	DESCRIPTION	DATE	APPROVED
A	REL PER ECO	93A223	5/4/93	RC
B	REVISED PER ECN	N950396	MS 5/25/95	MS
C	REVISED PER ECN	N950425	ML 6/28/95	ML
D	REVISED PER ECN	N950843	RAG 11/22/95	ML
E	REVISED PER ECN	N960133	03/07/96	ML
F	REVISED PER ECN	N960571	03/07/96	ML

CONTRACT NO.	DATE
1068986-1	5/4/93

DESIGNER	CHECKED	DATE
D. WASON		5/4/93

SIZE	CODE	REV. NO.	QTY.
D	25965	1068986	F

SCALE	SHEET	OF
1/2	1	2

MODEL	WIRING DIAGRAM
20-115	W960205-01
40-70	W960207-01

SEE SEPARATE PARTS LIST 1068986-1, -2

ELGAR

ASSY, FINAL, DCRB2

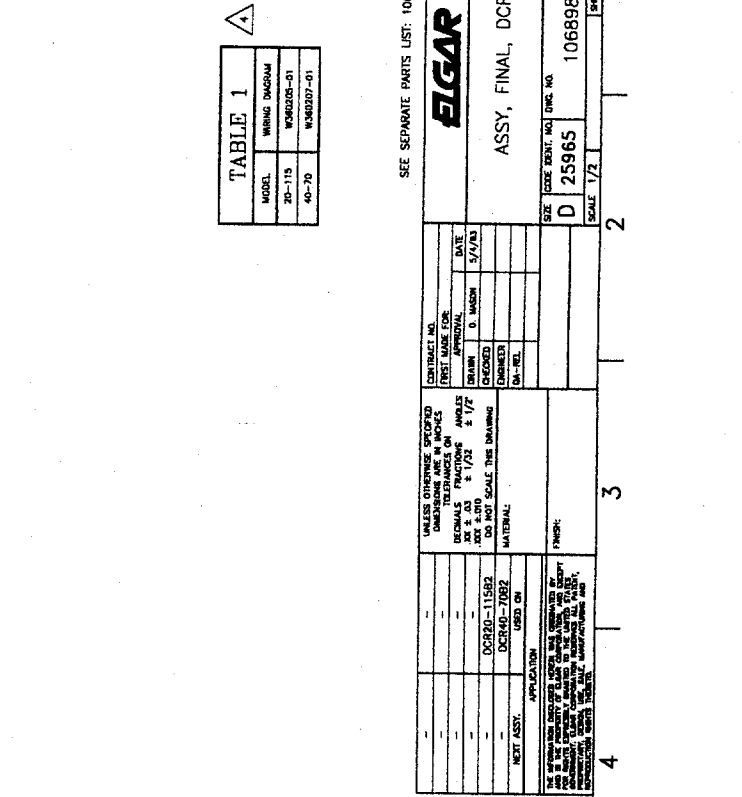
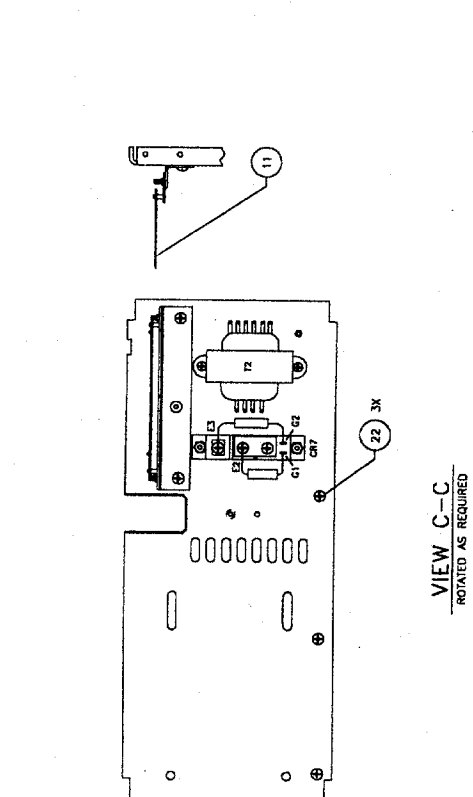


TABLE 1

MODEL	WIRING DIAGRAM
20-115	W960205-01
40-70	W960207-01

UNLESS OTHERWISE SPECIFIED
DIMENSIONS ARE IN INCHES
DECIMALS FRACTIONS ± 1/32
± 1/2
DO NOT SCALE THIS DRAWING
MATERIAL

FRONT:

APPLICATION USED ON

DCR20-11582
DCR40-7082

IF YOU HAVE ANY QUESTIONS OR NEED ASSISTANCE, CONTACT THE ELGAR POWER SUPPLY DIVISION AT THE FOLLOWING ADDRESS:

ELGAR POWER SUPPLY DIVISION
1068986-1, -2

NOTES: UNLESS OTHERWISE SPECIFIED,
1. ASSEMBLE PER ELGAR WORKMANSHIP STANDARD DOCUMENT NO. 0050003-01.
2. TORQUE AS SPECIFIED ± 1 IN.-LBS OR 10% WHICHEVER IS GREATER.
3. 10 IN.-LBS. 2. 23 IN.-LBS.

3. PART USED ON 1068986-1 ONLY.
4. FOR WIRING TERMINATIONS OF ITEM 18 & 19, SEE TABLE 1.

1068986

6-6A

1

2

3

4

5

6

7

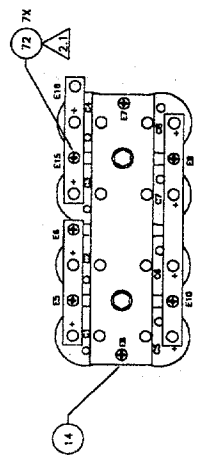
8

ZONE	REV	DESCRIPTION	DATE	APPROVED
		SEE SHEET 1		

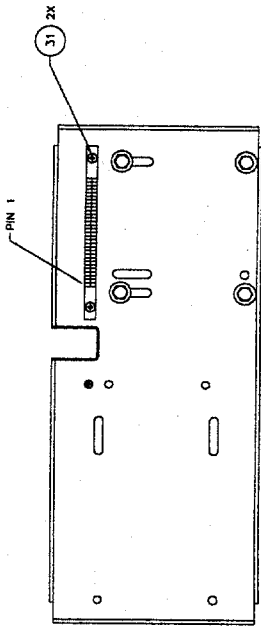
1068986

SIZE	CODE	REV	DATE	NO
D	25965	F	1068986	
SCALE		SHEET 2 OF 2		

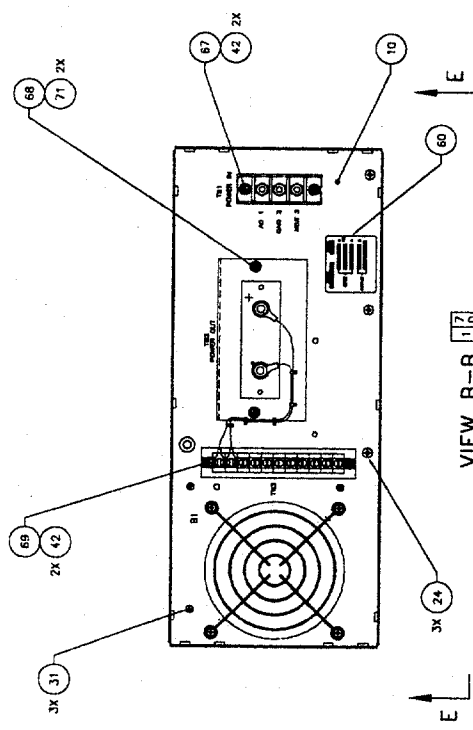
6-6B



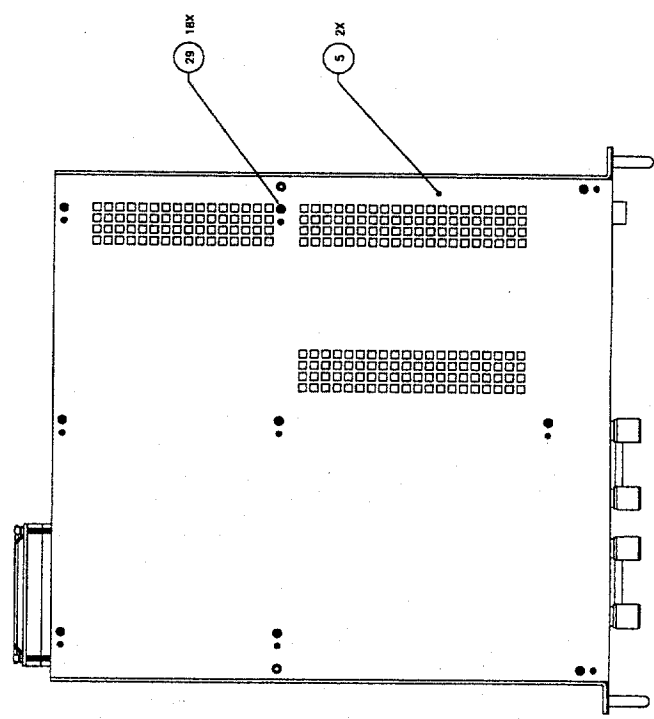
VIEW A
SCALE: 1/2



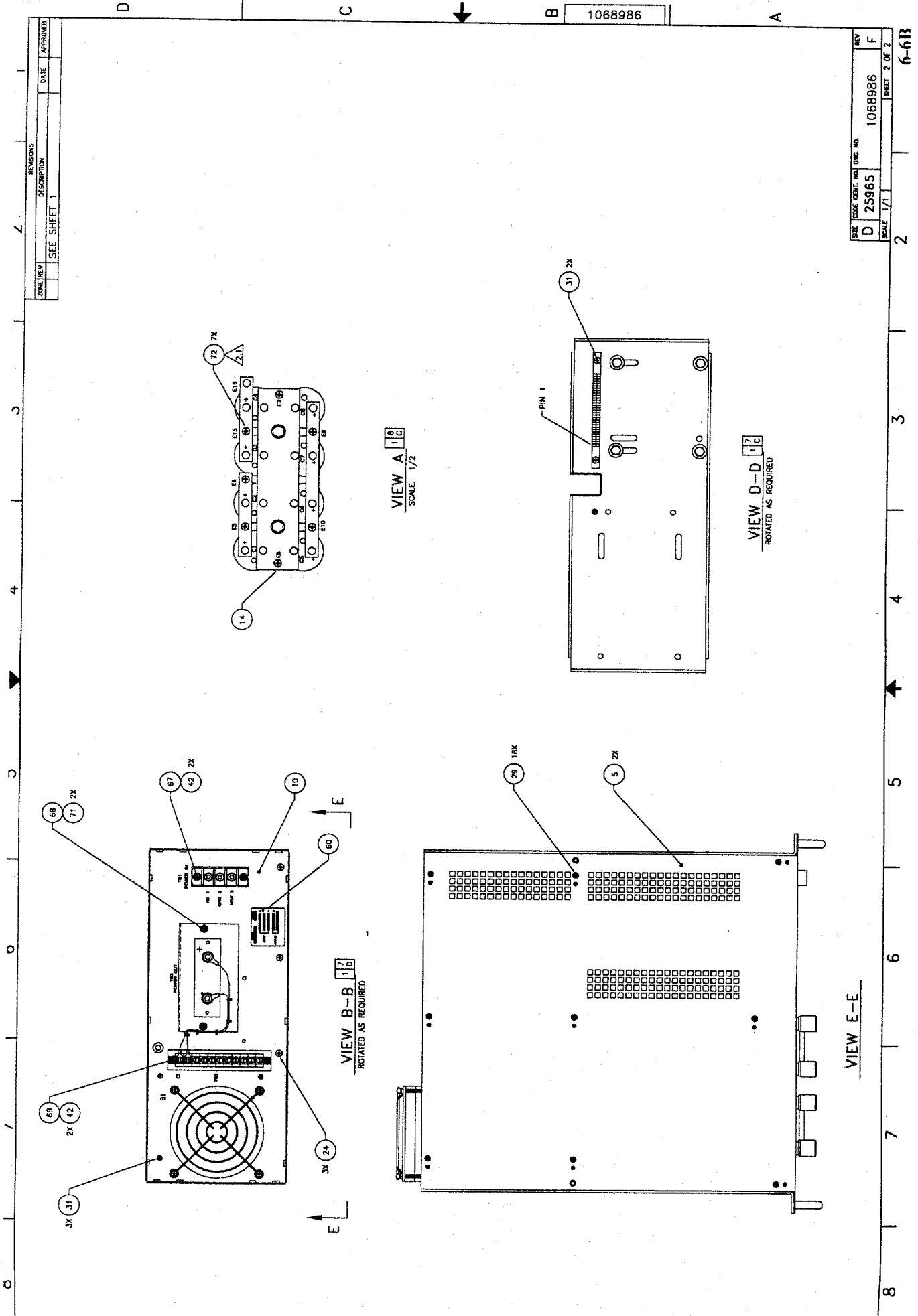
VIEW D-D
ROTATED AS REQUIRED



VIEW B-B
ROTATED AS REQUIRED

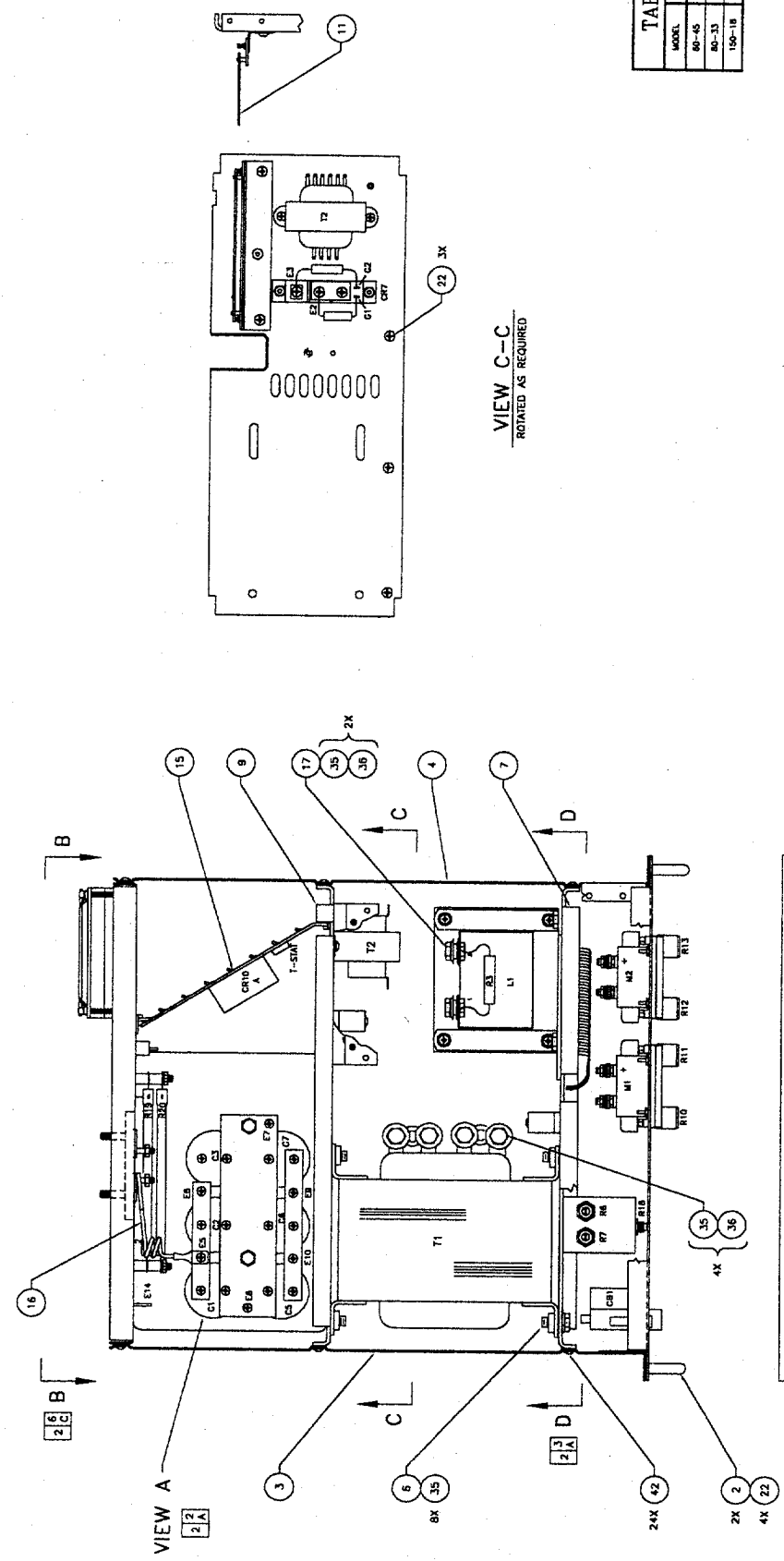


VIEW E-E



ZONE	REV	DESCRIPTION	DATE	APPROVED
A	REL PER ECO	93A223	RC 5/14/83	
B	REVISED PER ECN	N950396	MS 5/23/85	
C	REVISED PER ECN	N950843	PAC 11/22/85	M.L.
D	REVISED PER ECN	N960623	CD 10/29/86	M.L.

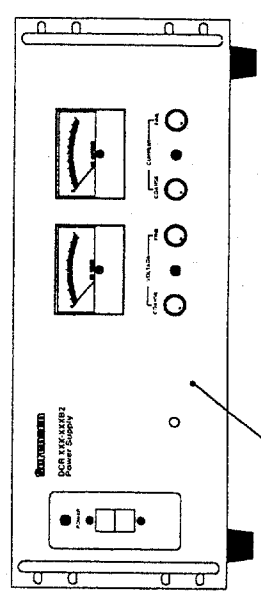
NOTES: UNLESS OTHERWISE SPECIFIED,
 1. ASSEMBLE PER ELGAR WORKMANSHIP STANDARD DOCUMENT NO. 0050003-01.
 2. FOR WIRING TERMINATIONS OF ITEM 18 & 19, SEE TABLE 1.
 3. TORQUE AS SPECIFIED ± 1 IN.-LBS OR 10% WHICHEVER IS GREATER.
 23 IN.-LBS.



VIEW C-C
 ROTATED AS REQUIRED

TABLE 1

MODEL	WIRING DIAGRAM
80-45	W30208-01
80-33	W30208-01
100-18	W30210-01



SEE SEPARATE PARTS LIST: 1068987-2, -3 & -4

CONTRACT NO.	TEST METHOD	DATE
APPROVAL	APPROVAL	5/1/83
DRAWN	D. MASON	
CHECKED		
ENGINEER		
QA-REL.		

UNLESS OTHERWISE SPECIFIED DIMENSIONS ARE IN INCHES DECIMALS FRACTIONS OR ANGLES .0015 ± 1/32 ± 1/32 ± 1/2 DO NOT SCALE THIS DRAWING MATERIAL

APPLICATION USED ON

IF THIS DRAWING IS USED FOR ANY OTHER APPLICATION WITHOUT THE WRITTEN PERMISSION OF ELGAR, THE USER ASSUMES ALL LIABILITY FOR ANY DAMAGE OR INJURY TO PERSONS OR PROPERTY CAUSED BY SUCH USE.

FIGAR

ASSY, FINAL, DCRB2

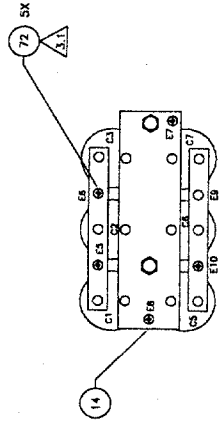
SIZE CODE DEPT. NO. D 25965 1068987

SCALE 1/2

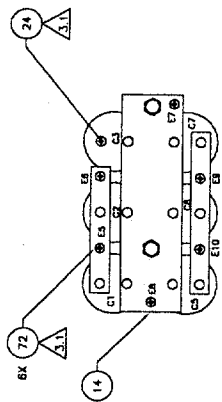
REV D

SHEET 1 OF 2

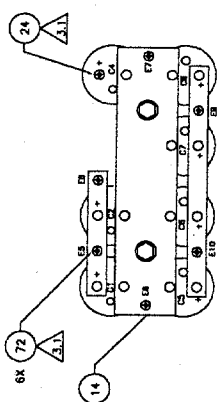
DATE	APPROVED
DESCRIPTION	
REVISIONS	
SEE SHEET 1	



USE FOR 1068987-4
(MODELS 150-19)

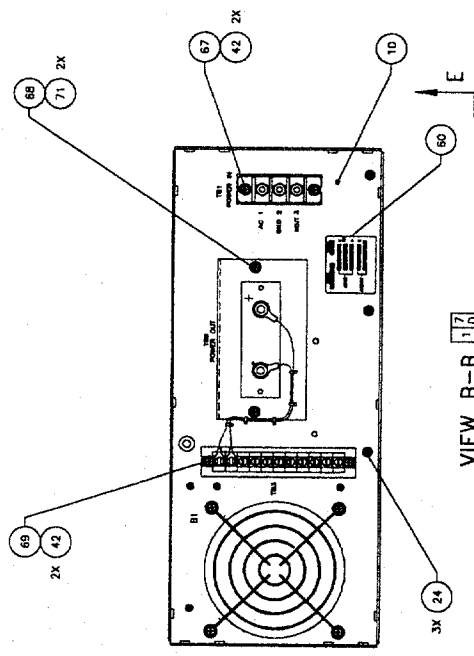


USE FOR 1068987-3
(MODELS 80-33)

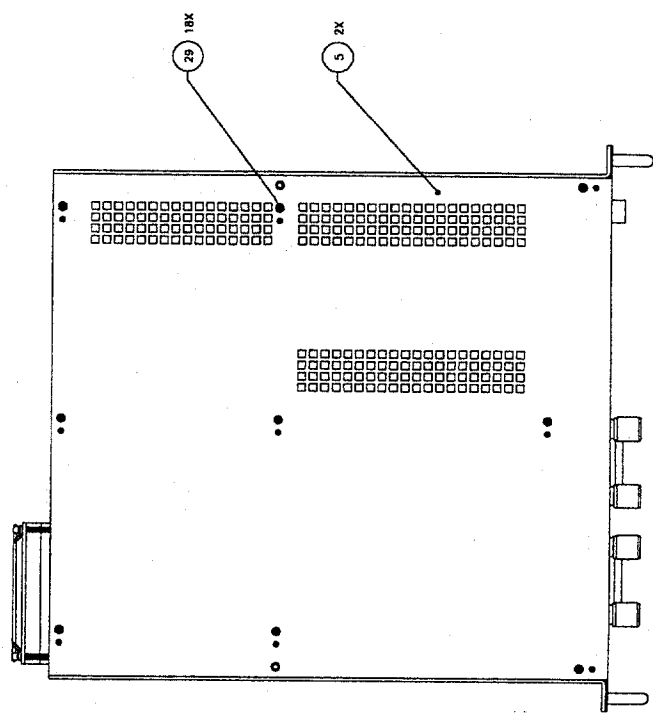


USE FOR 1068987-2
(MODELS 80-45)

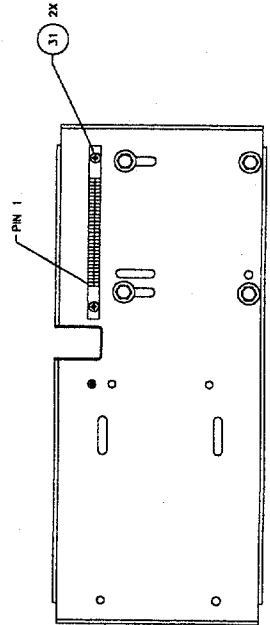
VIEW A
SCALE: 1/2



VIEW B-B
ROTATED AS REQUIRED



VIEW E-E



VIEW D-D
ROTATED AS REQUIRED

SIZE	CODE	EXT.	NO.	DATE	NO.
D	25965			1068987	D
SCALE	1/1				SHEET 2 OF 2

NOTES: UNLESS OTHERWISE SPECIFIED,
 1. ASSEMBLE PER ELGAR WORKMANSHIP STANDARD DOCUMENT NO. 0050003-01.
 2. FOR WIRING TERMINATIONS OF ITEM 18 & 19, SEE TABLE 1.
 3. TORQUE AS SPECIFIED ± 1 IN.-LBS OR 10% WHICHEVER IS GREATER.
 4. 23 IN.-LBS.

ZONE	REV	DESCRIPTION	DATE	APPROVED
A	REL PER ECO	93A223	RC	5/2/93
B	REVISED PER ECN	N950396	MS	5/25/95
C	REVISED PER ECN	N950683	DR	9/7/95
D	REVISED PER ECN	N950836	RAC	11/21/95
E	REVISED PER ECN	N950843	RAC	11/22/95
F	REVISED PER ECN	N010606	APR	4/15/02
				G. Stapp

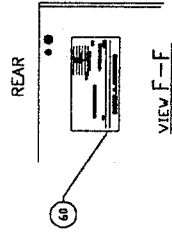
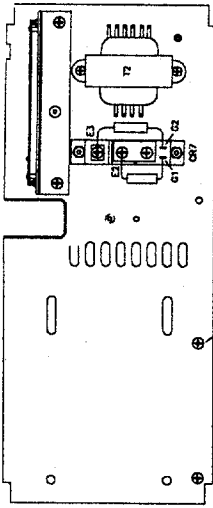
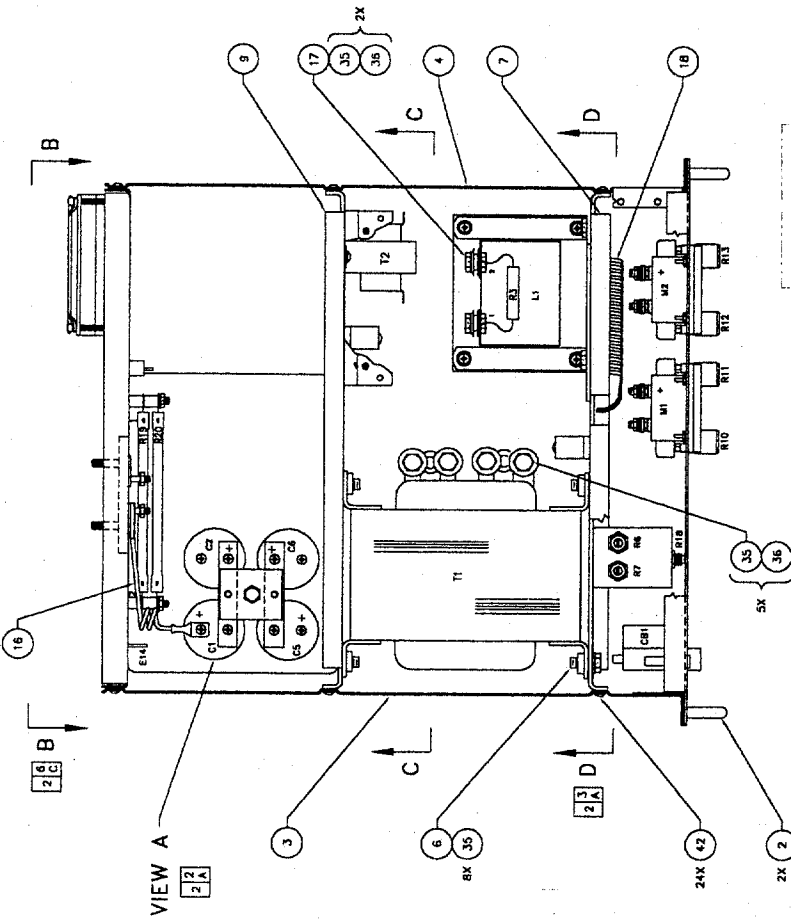
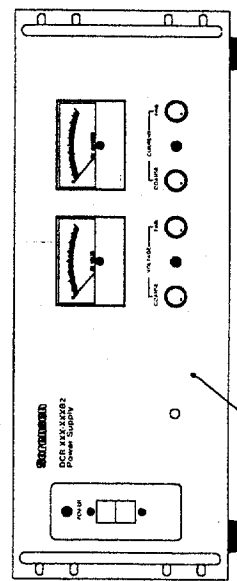


TABLE 1

MODEL	WIRING DIAGRAM
300-9	W80011-01
600-4.5	W80012-01



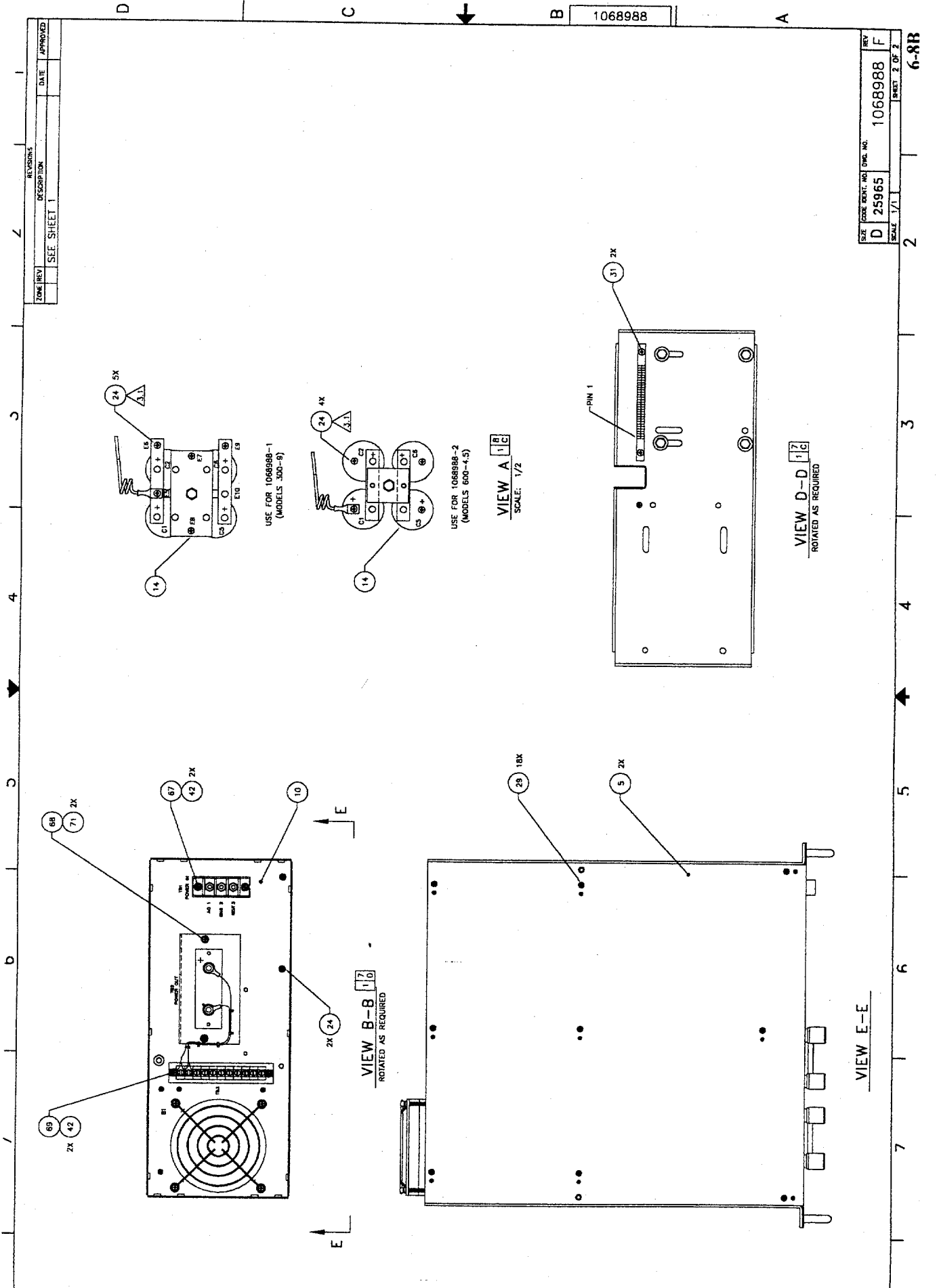
SEE SEPARATE PARTS LIST: 1068988-1, -2

CONTRACT NO.		DATE	
FIRST MADE FOR		3/7/93	
APPROVAL		BY	
DRAWN		D. WASH	
CHECKED			
DESIGNED			
QU-REL			
UNLESS OTHERWISE SPECIFIED, DIMENSIONS ARE IN INCHES. TOLERANCES ON DIMENSIONS ARE: .005 INCHES FRACTIONS 1/16 INCHES DECIMALS 1/100 INCHES ANGLES 1/16 INCHES DO NOT SCALE THIS DRAWING MATERIAL: DCR300-382 DCR600-4382			
NEXT ASSY.		APPLICATION	
USED ON		FINISH:	
THIS DRAWING IS THE PROPERTY OF ELGAR CORPORATION AND IS NOT TO BE REPRODUCED OR TRANSMITTED IN ANY FORM OR BY ANY MEANS, ELECTRONIC OR MECHANICAL, INCLUDING PHOTOCOPYING, RECORDING, OR BY ANY INFORMATION STORAGE AND RETRIEVAL SYSTEMS.			
SIZE	CODE	REV. NO.	REV.
D	25965	1068988	F
SCALE	1/2	SHEET 1 OF 2	

ELGAR

ASSY, FINAL, DCRB2

1 6-8A



ZONE REV	DESCRIPTION	DATE	APPROVED
SEE SHEET 1			

1068988

SIZE	CODE	REV	DATE	NO.
D	25965	F		
SCALE	1/1	SHEET	2	OF 2

USE FOR 1068988-1
(MODELS 300-9)

USE FOR 1068988-2
(MODELS 600-4.5)

VIEW A 1/C
SCALE: 1/2

VIEW D-D 17/C
ROTATED AS REQUIRED

VIEW B-B 17/D
ROTATED AS REQUIRED

VIEW E-E

6-8B

Circuit Symbol	DCRB2 2700 WATT MODEL							Description	Sorensen Part No.
	60-45			80-33					
	40-70		X	150-18			X		
	20-115	X		300-9		X			
				600-4.5					
CB1	X	X	X	X	X	X	X	Circuit Breaker, 30A, 250V	1064779-1
CR1 - CR6								Diode	
								Not Used	
CR7	X	X	X	X	X	X	X	Thyristor, 600V, 40A	1063180-1
CR8	X	X	X	X	X	X	X	Thyristor/Diode, 600V	1063611-2
CR9, CR10	X	X	X	X	X	X	X	Cap., .10 μ F, 250V FI	587626-65
CR10A	X							Rect. PWR, 400V, 90A	1063195-1
		X	X	X				Rect. Bridge, 200V, 100A	1063087-2
					X			Rect. Bridge, 200V, 50A	1063088-24
						X		Rect. Bridge, 400V, 12A	1063089-4
							X	Rect. Bridge, 800V, 12A	1063089-6
CR10B	X							Rect. Bridge, 400V, 90A	1063195-1
							X	Rect. Bridge, 800V, 12A	1063089-6
DS1								Lamps	
	X	X	X	X	X	X	X	Power Indicator, White	43-357
	X	X	X	X	X	X	X	Voltage Indicator, Red	1058485-1
	X	X	X	X	X	X	X	Current Indicator, Red	1058485-1
F1								Fuse	
								Not Used	
XF1								Not Used	
L1								Filter Choke	
	X							Inductor	1063139-2
		X						Inductor	1063139-3
			X					Inductor	1063139-4
				X				Inductor	1063139-5
					X			Inductor	1063139-6
						X		Inductor	1063139-7
							X	Inductor	1063139-8

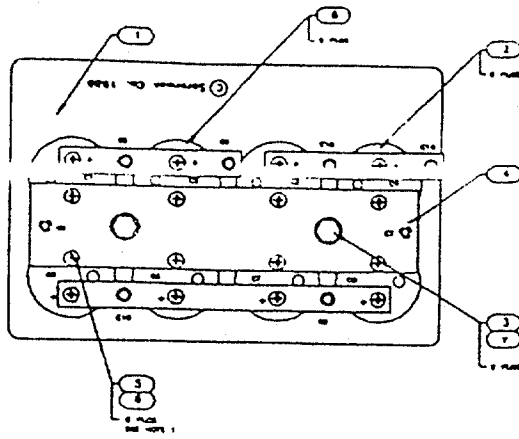
Replacement Parts List

Circuit Symbol	DCRB2 2700 WATT MODEL							Description	Sorensen Part No.
	60-45			80-33					
	40-70		X	150-18			X		
	20-115	X		300-9		X			
	X			X	600-4.5				
X									
M1	Panel Meters								
	X							Voltmeter, 0-25V	94-579-2
		X						Voltmeter, 0-50V	94-579-3
			X					Voltmeter, 0-80V	94-579-4
				X				Voltmeter, 0-100V	94-579-5
					X			Voltmeter, 0-200V	94-579-6
						X		Voltmeter, 0-400V	94-579-7
							X	Voltmeter, 0-800V	94-579-8
M2	X							Ammeter, 0-120A	1063179-2
		X						Ammeter, 0-100A	1063179-3
			X					Ammeter, 0-80A	1063179-4
				X				Ammeter, 0-40A	1063179-5
					X			Ammeter, 0-20A	1063179-6
						X		Ammeter, 0-10A	1063179-8
							X	Ammeter, 0-5A	1063179-10
R6, R7	X	X	X	X	X	X	X	Resistors (Ohm, 5%, unless noted)	
								100, 2W, Cermet, Pot	589343-37
R8, R9								Not Used	
R10	X	X	X	X	X	X	X	13K, 2W, WW Pot	29-590
R11	X	X	X	X	X	X	X	80, 2W, WW, Pot	29-593
R12	X	X	X	X	X	X	X	650, 2W, WW, Pot	589336-1
R13	X	X	X	X	X	X	X	80, 2W, WW, Pot	29-593
R18	X							25K, 2W, WW, Pot	589343-54
		X	X					50K, 2W, WW, Pot	589343-56
				X	X			100K, 2W, WW, Pot	589343-58
						X		250K, 2W, WW, Pot	589343-61
							X	500K, 2W, WW, Pot	589343-63
R19, R20	X							8, 95W, WW	1059432-16
R19, R20		X						30, 95W, WW	1059432-18
R19			X					60, 95W, WW	1059432-20

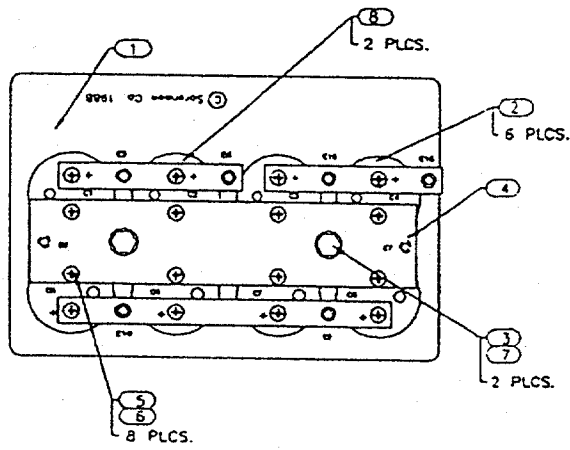
Circuit Symbol	DCRB2 2700 WATT MODEL							Description	Sorensen Part No.
	60-45			80-33					
	40-70		X	150-18			X		
	20-115			300-9		X			
				600-4.5					
								Resistors Cont'd (Ohm, 5%, unless noted)	
R19				X				100, 95W, WW	1059432-5
R19					X			400, 95W, WW	1059432-7
R19, R20						X	X	1.33K, 95W, WW	1059432-22
R23						X	X	5.36, 50W	586677-167
R25	X							Shunt	1063221-1
		X						Shunt	1063221-2
			X					Shunt	1063221-3
				X				Shunt	1063221-4
					X			Shunt	1063221-5
						X		Shunt	1063221-7
							X	Shunt	1063221-9
T1								Transformer	
	X							Power Transformer	1063138-2
		X						Power Transformer	1063138-3
			X					Power Transformer	1063138-4
				X				Power Transformer	1063138-5
					X			Power Transformer	1063138-6
						X	X	Power Transformer	1063138-7
T2	X	X	X	X	X	X	X	DCR-B Control Transformer	588240-1
								Miscellaneous	
	X	X	X	X	X	X	X	Thermostat	861-671-00
TB1	X	X	X	X	X	X	X	Terminal Block, 3 Pos., 50A, 1.7KV	587924-103
TB2	X	X	X	X	X	X	X	Assy. TB2	1064404-1

Replacement Parts List

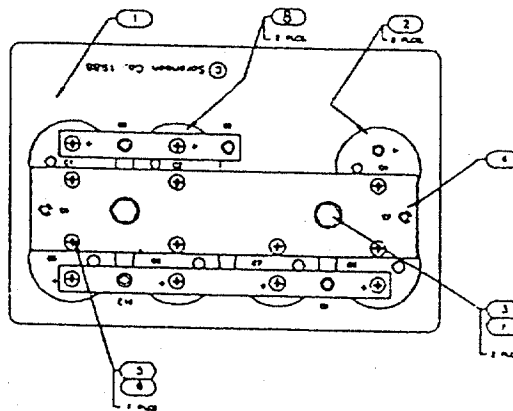
Circuit Symbol	DCRB2 2700 WATT MODEL							Description	Sorensen Part No.
	60-45	80-33	150-18	300-9	600-4.5				
								Miscellaneous Cont'd	
TB3	X	X	X	X	X	X	X	Terminal Block, 11 Pos., 20A	1063181-1
								TB1 Cover	1064025-70
								TB2 Cover	1064134-70
								TB3 Cover	1064256-70
	X							Front Panel Silkscreened	1063142-2
		X						Front Panel Silkscreened	1063142-3
			X					Front Panel Silkscreened	1063142-4
				X				Front Panel Silkscreened	1063142-5
					X			Front Panel Silkscreened	1063142-6
						X		Front Panel Silkscreened	1063142-7
							X	Front Panel Silkscreened	1063142-8
	X	X	X	X	X	X	X	Rear Panel Silkscreened	1063143-1
	X	X	X	X	X	X	X	Top Cover	1064602-70
	X							Control PCB Assembly	1063005-13
		X						Control PCB Assembly	1063005-4
			X					Control PCB Assembly	1063005-5
				X				Control PCB Assembly	1063005-6
					X			Control PCB Assembly	1063005-7
						X		Control PCB Assembly	1063005-8
							X	Control PCB Assembly	1063005-9
	X	X	X	X	X	X	X	Handles (2 Req'd)	30-786
B1	X	X	X	X	X	X	X	Fan	1063196-2
	X	X	X	X	X	X	X	Foot	30-473



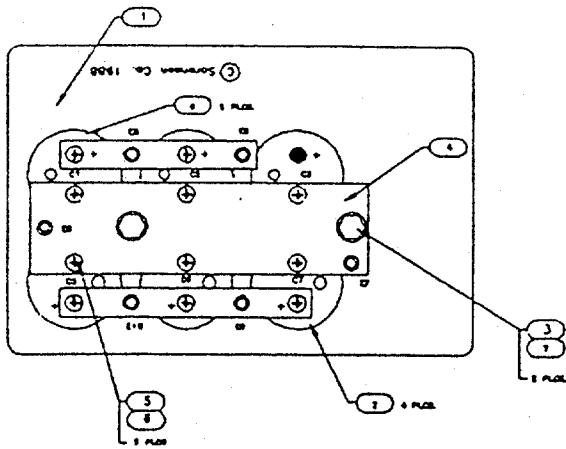
DCR 20-115B2
(1063229-1) Rev. C



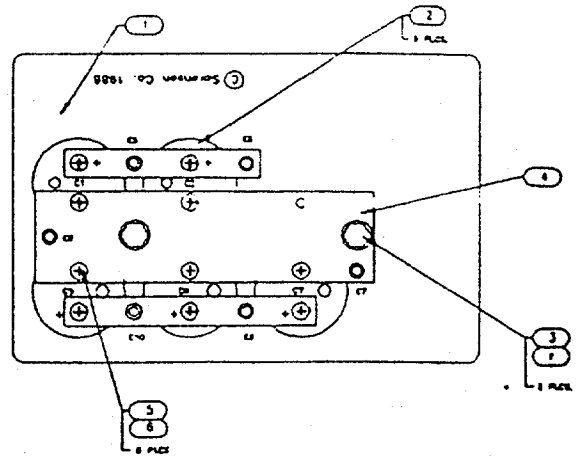
DCR 40-70B2
(1063229-2) Rev. D



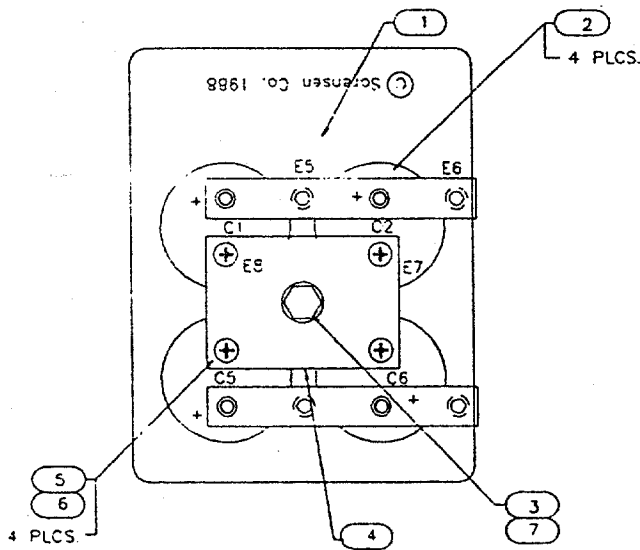
DCR 60-45B2
(1063229-7) Rev. E



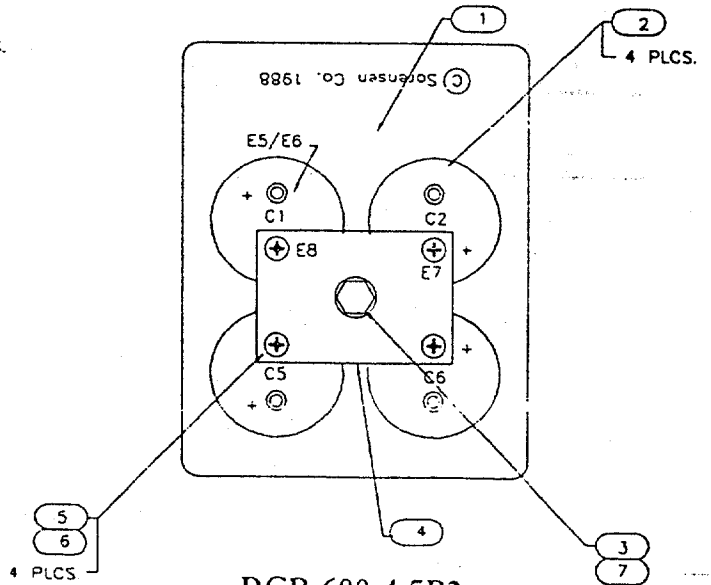
DCR 80-33B2
(1063229-3) Rev. G



DCR 150-18B2
(1063229-4) Rev. C



DCR 300-9B2
(1063228-2) Rev. E



DCR 600-4.5B2
(1063228-7) Rev. D

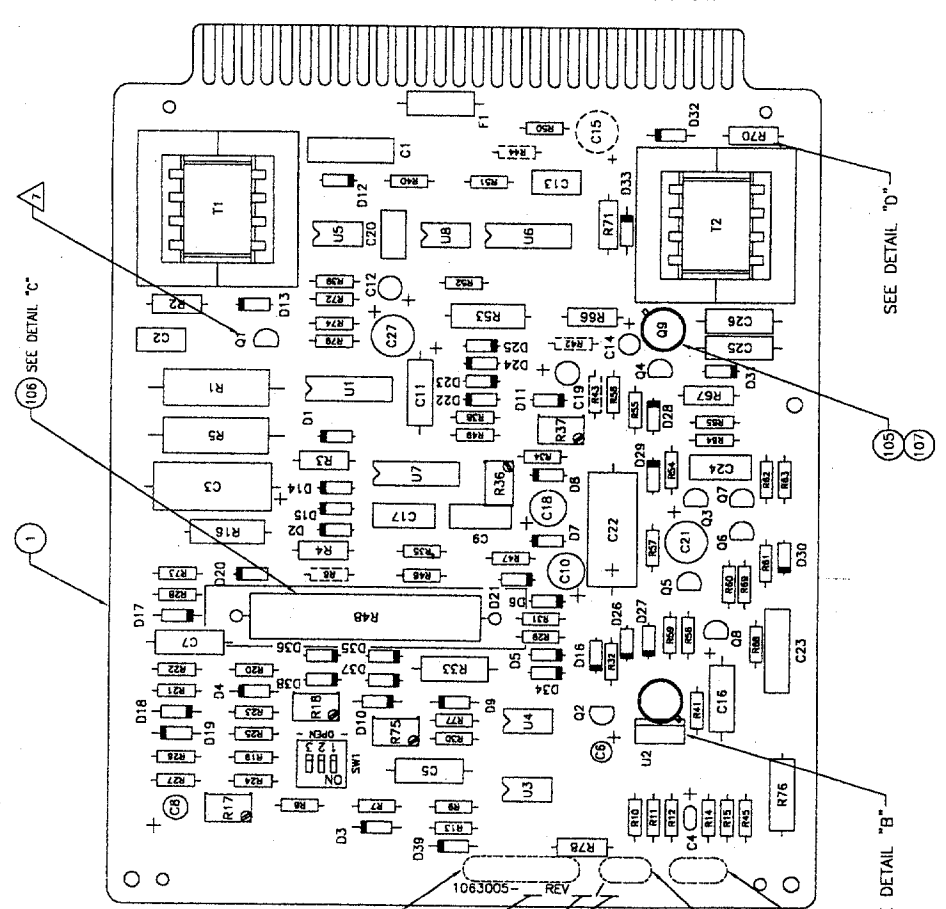
Circuit Symbol	DCRB2 2700 WATT MODEL					Description	Sorensen Part No.
	60-45		80-33				
	40-70		150-18				
	20-115		300-9				
			600-4.5				
C1, C2, C3, C4, C5, C6 C7, C8,	X					Capacitor (μ F, -10 +100, unless noted)	
		X				55.0K, 25V	1063869-2
C1, C2, C3 C4, C5, C6 C7, C8,		X				25.0K, 75V	1063869-4
C1, C2 C4, C5, C6, C7, C8			X			25.0K, 75V	1063869-4
C1, C2 C3, C5, C6 C7			X			10.0K, 100V	1063869-5
C1, C2, C5, C6, C7				X		3.50K, 200V	1063254-6
C1, C2 C5 C6				X	X	1.70K, 400V	1063254-7
R3	X					Resistor (ohms, 5%, WW, unless noted)	
		X				.22, 12.5W, 10%	1063224-8
			X			.33, 12.5W,	1063224-2
				X		.68, 12.5W, 10%	1063224-12
					X	1.00, 12.5W	1063224-4
					X	2.20, 5W	1063224-5
						X	4.70, 12.5W
					X	47, 12.5W	1063224-6
<p>Note: The following units were supplied with two different Capacitor arrangements. Use caution when replacing Capacitors. Applicable for the following units:</p> <p>DCR 20-115B2 DCR 80-33B2 DCR 40-70B2 DCR 150-18B2 DCR 60-45B2</p> <p>Replacements should be made only with same values as values removed. Refer to schematics on pages 6-4 & 6-5 of manual.</p>							

8 7 6 5 4 3 2 1

TIME REV	REVISIONS	DESCRIPTION	DATE	APPROVED
A	ORIGINATED		880412	
B	REVISED		880512	
C	REVISED		880807	
D	REVISED PER ECO	89A377	881118	
E	REVISED PER ECO	92A148	920420	
F	REVISED PER ECO	92A537	921002	
G	REVISED PER ECO	92A713	921108	
H	REVISED PER ECO	92A242	940830	
J	REVISED PER ECN	N940122	841213	
K	REV PER ECN	N940147	850510	
L	REV PER ECN	N950370	850512	
M	REV PER ECN	N950374	850602	ML
N	REVISED PER ECN	N960079	07/05/96	ML
P	REVISED PER ECN	N960100	07/11/96	ML
R	REVISED PER ECN	N960165	08/29/96	ML
T	REVISED PER ECN	N981232	12/4/98	STAPP

PIN 1 COMPONENT SIDE
PIN 29 FAN SIDE

28 29 30 31 32 33 34 35 36 37 38 39 40 41 42 43 44 45 46 47 48 49 50 51 52 53 54 55 56



- NOTES: UNLESS OTHERWISE SPECIFIED.
- ASSEMBLE PER ELGAR WORKMANSHIP STANDARD DOCUMENT NO. 0850003-01.
 - REFERENCE SCHEMATIC NUMBER 1063006
 - ELECTRICAL COMPONENTS ARE KEYED TO PARTS LIST BY REFERENCE DESIGNATORS
 - INK STAMP APPROPRIATE REVISION LEVEL USING BLACK EPOXY INK COMPONENTS SHOWN DASHED ARE TO BE INSTALLED AT ANOTHER ASSEMBLY DASH LEVEL MASK HOLES, MUST BE KEPT SOLDER FREE
 - COMPONENTS 2W OR LARGER MUST BE ELEVATED WITH FORMED LEADS RESISTORS AFFECTED ARE R1,R4, R5, R16, R33, R48, R53 AND R76, AND F1 ALSO (SEE DETAIL A)
 - REMOVE Q1 ON -XM61 VERSION.

8. ELECTROSTATIC DISCHARGE CONTROL PROGRAM FOR PROTECTION OF ELECTRICAL AND ELECTRONIC PARTS, ASSEMBLIES AND EQUIPMENT PER IP 0460007-01.

SEE SEPARATE PARTS LIST : 1063005-XXX

CONTRACT NO.		DATE	
FIRST MADE FOR		APPROVAL	
DESIGNED	BY	DATE	DATE
CHECKED	BY	DATE	DATE
ENGINEER	J.P. WARD	DATE	DATE
QA-REL.		DATE	DATE

UNLESS OTHERWISE SPECIFIED DIMENSIONS ARE IN INCHES DECIMAL FRACTIONS ANGLES IN DEGREES	SIZE	CODE	REV.
DO NOT SCALE THIS DRAWING	D	25965	1063005
MATERIAL	SCALE	2/1	SHEET 1 OF 1
USED ON			
APPLICATION			
TEST ASST.			
FINISH			

CAUTION SENSITIVE ELECTRONIC COMPONENTS

1063005

Replacement Parts List (Control Printed Circuit Board)

Circuit Symbol	DCRB2 2700 WATT MODEL							Description	Sorensen Part No.
	60-45	40-70	80-33	150-18	300-9	20-115	600-4.5		
	X							Assy. Control PCB	
		X						20V	1063005-13
		X						40V	1063005-4
			X					60V	1063005-5
				X				80V	1063005-6
					X			150V	1063005-7
						X		300V	1063005-8
							X	600V	1063005-9
								Capacitors (μ F, unless noted)	
C1	X	X	X	X	X	X	X	FI, .47, 100V	24-2015-15
C2	X	X	X	X	X	X	X	AL, .1, 250V	1063059-1
C3	X	X	X	X	X	X	X	AL, 150, 50V	1063046-55
C4	X	X	X	X	X	X	X	CE, .1, 50V	980707-3
C5	X	X	X	X	X	X	X	FI, .01, 400V	587626-89
C6	X	X	X	X	X	X	X	TA, 1, 35V	235-7395P76
C7	X	X	X	X	X	X	X	TA, 3.3, 35V	586058-13
C8	X	X	X	X	X	X	X	TA, 6.8, 25V	235-7395P64
C9	X	X	X	X	X	X	X	FI, .01, 630V	24-2015-1
C10	X	X	X	X	X	X	X	FI, 47, 50V	1064980-1
C11	X	X	X	X	X	X	X	TA, 6.8, 35V	586058-17
C12	X	X	X	X	X	X	X	TA, 22, 25V	235-7395P67
C13	X	X	X	X	X	X	X	FI, .1, 100V	24-2037-7
C14	X	X	X	X	X	X	X	TA, 1.0, 25V	235-7395P61
C15	X			X				TA, 33.0, 20V	235-7395P55
		X	X		X	X	X	TA, 15, 20V	586385-5
C16	X	X	X	X	X	X	X	TA, 15, 20V	586385-5
C17	X	X	X	X	X	X	X	CE, 1, 50V	1033981-47
C18	X	X	X	X	X	X	X	AL, 220, 25V	1064980-2
C19	X	X	X	X	X	X	X	FI, 47, 50V	1064980-1
C20	X	X	X	X	X	X	X	FI, .068, 250V	24-2015-11
C21	X	X	X	X	X	X	X	TA, 47, 20V	235-7395P56
C22	X	X	X	X	X	X	X	MY, 4.7, 100V	235-7440P3
C23	X	X	X	X	X	X	X	FI, .47, 100V	24-2037-15
C24	X	X	X	X	X	X	X	FI, 0.15, 400V	24-2015-3
C25	X	X	X	X	X	X	X	FI, .01, 400V	587626-89
C26	X	X	X	X	X	X	X	FI, .0033, 200V	24-2409-4
C27	X	X	X	X	X	X	X	TA, 22, 25V	235-7395P67

Replacement Parts List (Control Printed Circuit Board)

Circuit Symbol	DCRB2 2700 WATT MODEL							Description	Sorensen Part No.
	60-45			80-33					
	40-70			150-18					
	20-115			300-9					
				600-4.5					
								Diodes	
D1	X	X	X	X	X	X	X	1N5234B, Zener	588101-9
D2	X	X	X	X	X	X	X	1N5242B, Zener	588101-15
D3	X	X	X	X	X	X	X	1N5245B, Zener	588101-17
D4	X	X	X	X	X	X	X	1N943A, Zener	588105-7
D5	X	X	X	X	X	X	X	1N825, Zener	588105-3
D6	X	X	X	X	X	X	X	1N4745A, Zener	588102-12
D7	X	X	X	X	X	X	X	1N4747A, Zener	588102-13
D8	X	X	X	X	X	X	X	1N4745A, Zener	588102-12
D9-D10	X	X	X	X	X	X	X	Rect, PWR, 1A, 800V	322-7236P6
D11	X	X	X	X	X	X	X	1N5235B, Zener	588101-10
D12-D38	X	X	X	X	X	X	X	Rect, PWR, 1A, 800V	322-7236P6
D39	X	X	X	X	X	X	X	1N4743A, 1W, Zener	588102-10
								Integrated Circuits (Linear)	
U1	X	X	X	X	X	X	X	LM710CM	386-7277P4
U2	X	X	X	X	X	X	X	LM317T	984405-1
U3	X	X	X	X	X	X	X	LM358 OP-AMP	1058985-1
U4-U5	X	X	X	X	X	X	X	741 OP-AMP	586372-3
U6-U7	X	X	X	X	X	X	X	723 V, REG.	586062-1
U8	X	X	X	X	X	X	X	741 OP-AMP	586372-3
								Transistors	
Q1	X	X	X	X	X	X	X	MPS2222A	1064104-2
Q2	X	X	X	X	X	X	X	2N2907A	11Q0001-000
Q3-Q4	X	X	X	X	X	X	X	MPS2222A	1064104-2
Q5-Q8	X	X	X	X	X	X	X	2N2907R	11Q0001-000
Q9	X	X	X	X	X	X	X	2N2219A	386-7249P32
								Resistors (ohms, 1/4W, unless noted)	
R1	X	X	X	X	X	X	X	180, 5W, WWD	586054-40
R2	X	X	X	X	X	X	X	4.75, 1/2W, Mfilm	1063040-221
R3	X	X	X	X	X	X	X	3.01, 1/2W, Mfilm	1063040-97
R4	X	X	X	X	X	X	X	1K, 1W, Mfilm	1063041-74
R5	X	X	X	X	X	X	X	100, 5W, WWD	586054-80

Replacement Parts List (Control Printed Circuit Board)

Circuit Symbol	DCRB2 2700 WATT MODEL							Description	Sorensen Part No.
	60-45			80-33					
	40-70	20-115		150-18	300-9	600-4.5			
R6	X	X						Resistors Cont'd (ohms, 1/4W, unless noted)	
			X					11.5K, Mfilm	586055-125
				X				6.81K, Mfilm	586055-14
					X			10K, Mfilm	586055-122
					X			5.62K, Mfilm	586055-110
						X	X	6.81K, Mfilm	586055-114
R7	X	X	X	X	X	X	X	30.1K, Mfilm	586055-145
R8	X	X	X	X	X	X	X	1.21K, Mfilm	586055-78
R9, R10, R11	X	X	X	X	X	X	X	100K, Mfilm	586055-170
R12	X	X	X	X	X	X	X	1.00K, Mfilm	586055-74
R13	X	X	X	X	X	X	X	1.21K, Mfilm	586055-78
R14	X	X	X	X	X	X	X	3.65K, Mfilm	586055-101
R15	X	X	X	X	X	X	X	243, Mfilm	586055-200
R16	X	X	X	X	X	X	X	2.2K, 3W, WWD	167401-6
R17	X	X	X	X	X	X	X	200K, 1/2W, Cermet	1058959-5
R18	X	X	X	X	X	X	X	5K, 1/2W, Cermet	1058959-9
R19	X	X	X	X	X	X	X	2.05, Mfilm	586055-89
R20	X	X	X	X	X	X	X	9.09, Mfilm	586055-120
R21	X	X	X	X	X	X	X	2.15K, Mfilm	586055-90
R22	X	X	X	X	X	X	X	100K, Mfilm	586055-170
R23	X	X	X	X	X	X	X	487, Mfilm	586055-59
R24	X	X	X	X	X	X	X	9.09K, Mfilm	586055-120
R25	X	X	X	X	X	X	X	1.00K, Mfilm	586055-74
R26-R27	X	X	X	X	X	X	X	3.32K, Mfilm	586055-99
R28	X	X	X	X	X	X	X	1.00K, Mfilm	586055-74
R29-R30	X	X	X	X	X	X	X	6.65K, Mfilm	586055-188
R31	X	X	X	X	X	X	X	3.92K, Mfilm	586055-202
R32	X	X	X	X	X	X	X	12.1K, Mfilm	586055-126
R33	X	X	X	X	X	X	X	330, 3W, WWD	167401-101
R34	X	X	X	X	X	X	X	39.2K, Mfilm	586055-203
R35	X	X	X	X	X	X	X	4.70K, Mfilm	586055-207
R36-R37	X	X	X	X	X	X	X	10K, 1/2W, Cermet	1058959-10
R38	X	X	X	X	X	X	X	53.6K, Mfilm	586055-157
R39	X	X	X	X	X	X	X	8.66K, Mfilm	586055-119
R40	X	X	X	X	X	X	X	1.21K, Mfilm	586055-78
R41	X	X	X	X	X	X	X	1.82K, Mfilm	586055-205

Replacement Parts List (Control Printed Circuit Board)

Circuit Symbol	DCRB2 2700 WATT MODEL							Description	Sorensen Part No.
	60-45			80-33					
	40-70		X	150-18			300-9		
	20-115	X		600-4.5					
R42	X								Resistors Cont'd (ohms, 1/4W, unless noted)
		X						20K, Mfilm	586055-194
			X					40.2K, Mfilm	586055-151
				X				59.0K, Mfilm	586055-159
					X			78.7K, Mfilm	586055-165
						X		150K, Mfilm	586055-236
							X	301K, Mfilm, 1/2W	1063040-215
R43							X	604K, Mfilm, 1W	1063041-250
R44	X			X				Not Used	
R45		X	X		X	X	X	681, Mfilm	586055-66
	X	X	X	X	X	X	X	1.82K, Mfilm	586055-205
R46	X	X	X	X	X	X	X	1.82K, Mfilm	586055-205
R47	X	X	X	X	X	X	X	47.5, Mfilm	586055-209
R48	X	X	X	X	X	X	X	150, Mfilm	586055-210
R49	X	X	X	X	X	X	X	1.50K, 10W, WWD	167403-41
R50	X	X	X	X	X	X	X	1.21K, Mfilm	586055-78
R51-R52	X	X	X	X	X	X	X	182, Mfilm	586055-206
R53	X	X	X	X	X	X	X	332K, Mfilm	586055-211
R54	X	X	X	X	X	X	X	620, 3W, WWD	167401-108
R55	X	X	X	X	X	X	X	4.70K, Mfilm	586055-207
R56	X	X	X	X	X	X	X	274K, Mfilm	586055-192
R57	X	X	X	X	X	X	X	4.70K, Mfilm	586055-207
R58	X	X	X	X	X	X	X	47.5K, Mfilm	586055-209
R59	X	X	X	X	X	X	X	100K, Mfilm	586055-170
R60	X	X	X	X	X	X	X	10K, Mfilm	586055-122
R61	X	X	X	X	X	X	X	681, Mfilm	586055-66
R62	X	X	X	X	X	X	X	3.32K, Mfilm	586055-99
R63	X	X	X	X	X	X	X	5.62K, Mfilm	586055-110
R64	X	X	X	X	X	X	X	39.2K, Mfilm	586055-203
R65	X	X	X	X	X	X	X	12.1K, Mfilm	586055-126
R66	X	X	X	X	X	X	X	332, Mfilm	586055-51
R67	X	X	X	X	X	X	X	1, 1/2W, Mfilm	1063040-226
R68	X	X	X	X	X	X	X	22.1, 1/2W, Mfilm	1063040-229
R69	X	X	X	X	X	X	X	39.2K, Mfilm	586055-203
R70-R71	X	X	X	X	X	X	X	22.1K, Mfilm	586055-204
R72	X	X	X	X	X	X	X	47.5, 1/2W, Mfilm	1063040-243
R73	X	X	X	X	X	X	X	332, Mfilm	586055-51
								2.74K, Mfilm	586055-95

Replacement Parts List (Control Printed Circuit Board)

Circuit Symbol	DCRB2 2700 WATT MODEL							Description	Sorensen Part No.
	60-45			80-33					
	40-70			150-18					
	20-115	300-9		600-4.5					
								Resistors Cont'd (ohms, 1/4W, unless noted)	
R74	X	X	X	X	X	X	X	4.99K, Mfilm	586055-187
R75	X	X	X	X	X	X	X	Pot, 500, 1/2W, Cermet	1058959-6
R76	X	X	X	X	X	X	X	390, 3W, WWD	167401-103
R77	X	X	X	X	X	X	X	649, Mfilm	586055-65
R78	X	X	X	X	X	X	X	1.00, 1/2W, Mfilm	1063040-74
R79	X	X	X	X	X	X	X	4.99K, Mfilm	586055-187
								Transformer	
T1	X	X	X	X	X	X	X	Trans, Pulse, 115, DC	589333-1
T2	X	X	X	X	X	X	X	Trans, Pulse, XXX, DC	586897-1
								Miscellaneous	
SW1	X	X	X	X	X	X	X	Switch Dip 3 PST	1060392-3
F1	X	X	X	X	X	X	X	Fuse SB, Small Miniature Pigtail, .5A, 250V	1063539-3